

## MODx - M SERIES FIRE DEPARTMENT

WINDOW SHUTTER HARDWARE PACKAGES							
MARK #	DESCRIPTION	ROUGH OPENING	SHUTTER LEAF	LOCKING HANDLE KIT	NON-LOCKING HANDLE KIT	HOLD OPEN	THERMAL LINING CHANNELS
W1	LOCKING WINDOW SHUTTER	38"x46 1/2"	1	1		1	
W2	LOCKING BURN ROOM SHUTTER	38"x46 1/2"	1	1		1	1
W3	LOCKING ATTIC SHUTTER	38"x46 1/2"	1	1		1	
W4	NON-LOCKING WINDOW SHUTTER	38"x46 1/2"	1		1	1	
W5	NON-LOCKING BURN ROOM SHUTTER	38"x46 1/2"	1		1	1	1
W6	NON-LOCKING ATTIC SHUTTER	38"x46 1/2"	1		1	1	

DOOR HARDWARE PACKAGES														
MARK #	DESCRIPTION	ROUGH OPENING	DOOR LEAF	INACTIVE LEAF	STAINLESS STEEL HINGE	DOOR SWEEP	DOOR SWEEP MOUNT KIT	DOOR KNOB PLATE	LOCKING KNOB SET	PASSING KNOB SET	BURN DOOR KIT	SLIDE LATCH	BARREL BOLT	CANE BOLT
D1	EXTERIOR SINGLE PLATE DOOR	38"x89 1/16"	1		1	1	1	1	1					
D2	EXTERIOR SINGLE BURN ROOM DOOR	38"x89 1/16"	1		1	1	1	1			1	1		
D3	EXTERIOR DOUBLE PLATE DOOR	77 1/4"x89 1/16"	1	1	2	2	2	1	1			1	1	1
D4	EXTERIOR DOUBLE BURN ROOM DOOR	77 1/4"x89 1/16"	1	1	2	2	2				1	1	1	1
D5	INTERIOR SINGLE PLATE DOOR	38"x89 1/16"	1		1	1	1	1		1				
D6	INTERIOR SINGLE BURN ROOM DOOR	38"x89 1/16"	1		1	1	1				1	1		
D7	INTERIOR DOUBLE PLATE DOOR	77 1/4"x89 1/16"	1	1	2	2	2	1		1			1	1
D8	INTERIOR DOUBLE BURN ROOM DOOR	77 1/4"x89 1/16"	1	1	2	2	2				1	1	1	1

**MODULAR BUILDING  
PROTECTED BY  
U.S. Pat. No. 11,276,323**

THESE DRAWINGS, SPECIFICATIONS, IDEAS, DESIGNS, AND ARRANGEMENTS ARE AND SHALL REMAIN THE PROPERTY OF JAHNKE AND SONS CONSTRUCTION AND NO PART THEREOF SHALL BE COPIED, REPRODUCED, OR DISTRIBUTED WITHOUT WRITTEN CONSENT OF JAHNKE AND SONS CONSTRUCTION.

PROJECT NUMBER:	00-W-000
PROJECT DIRECTOR:	CM 2
DRAWN BY:	JPK 3
CHECKED BY:	
PRINT DATE:	00-00-00 4

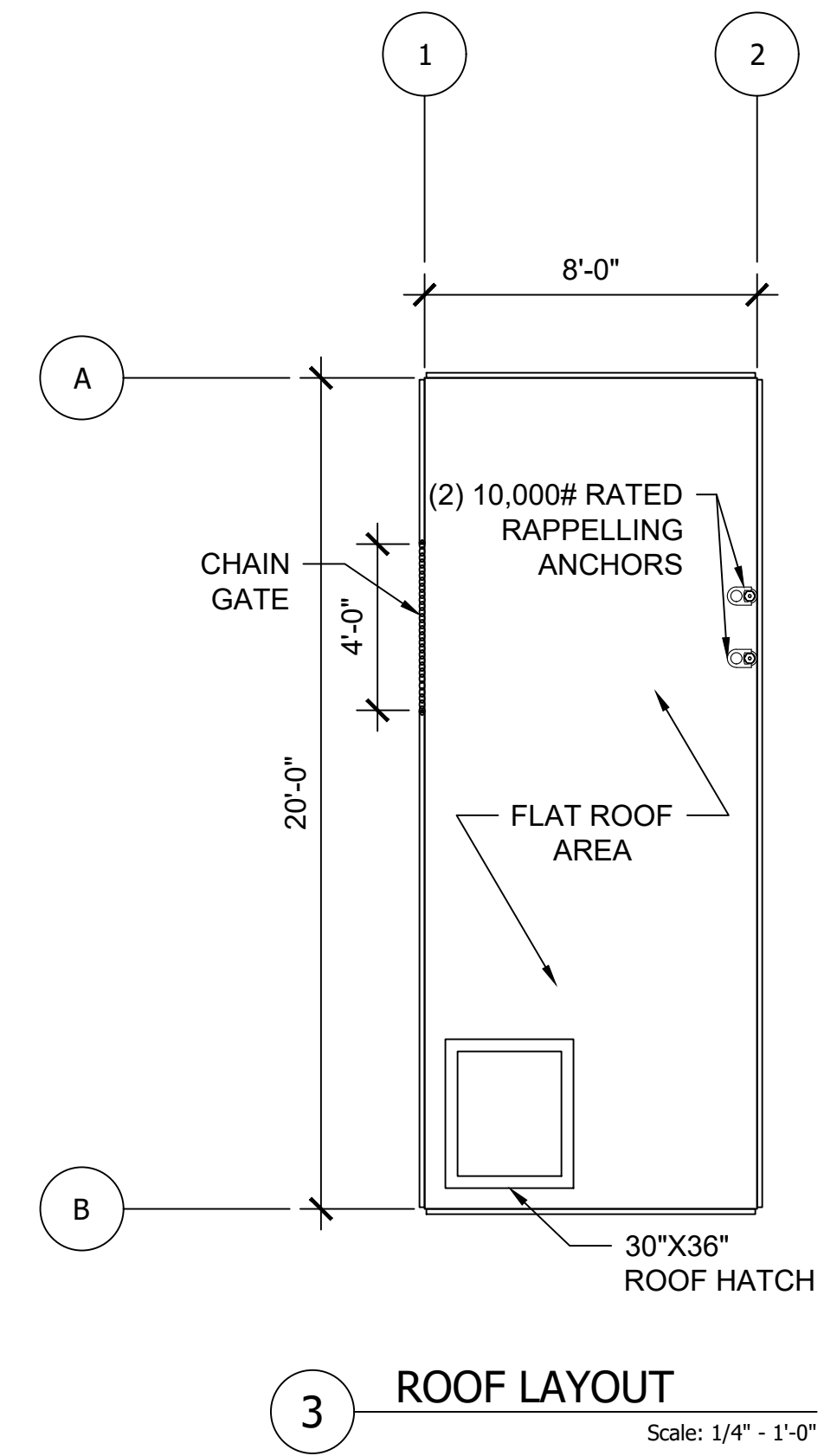
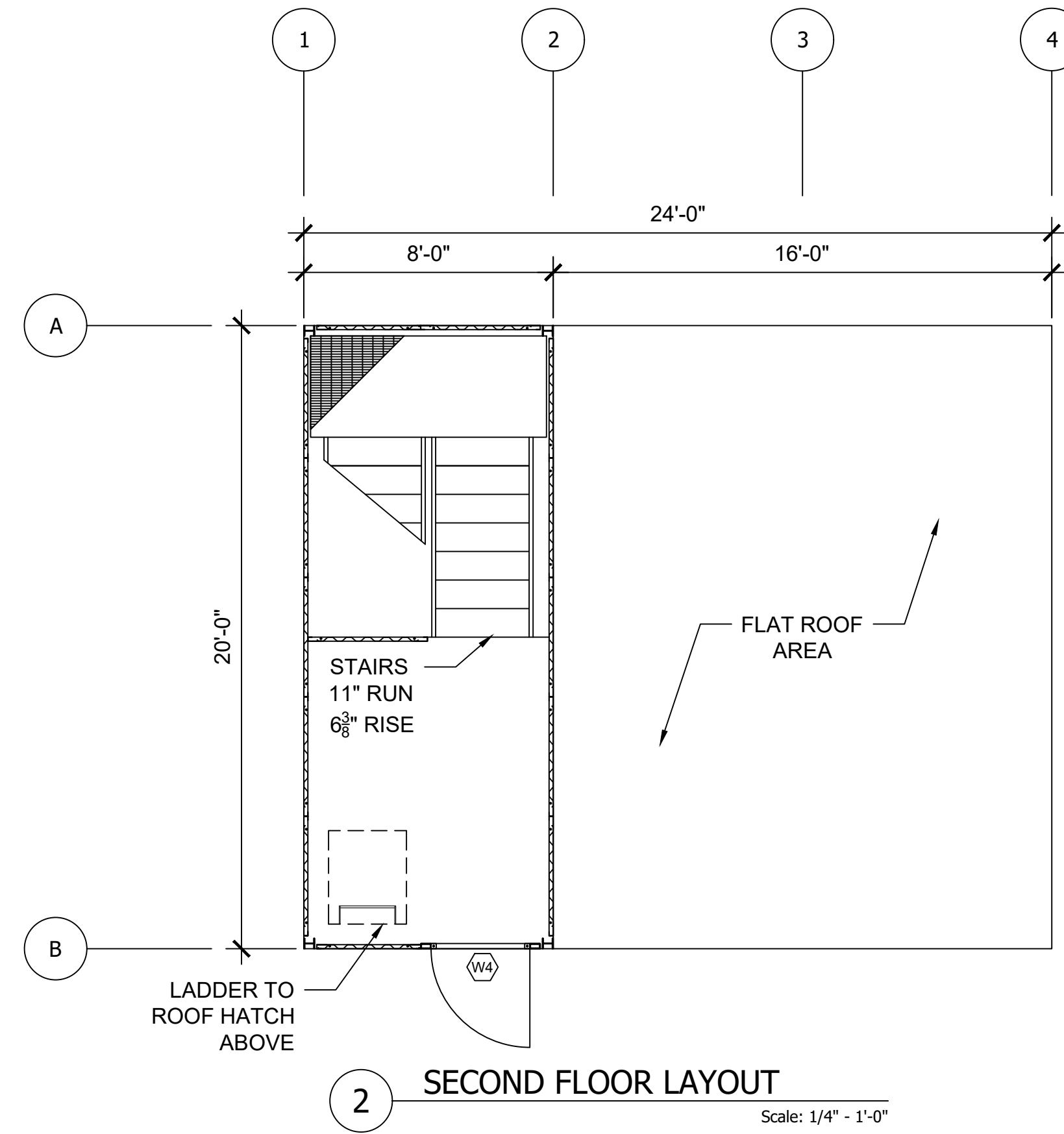
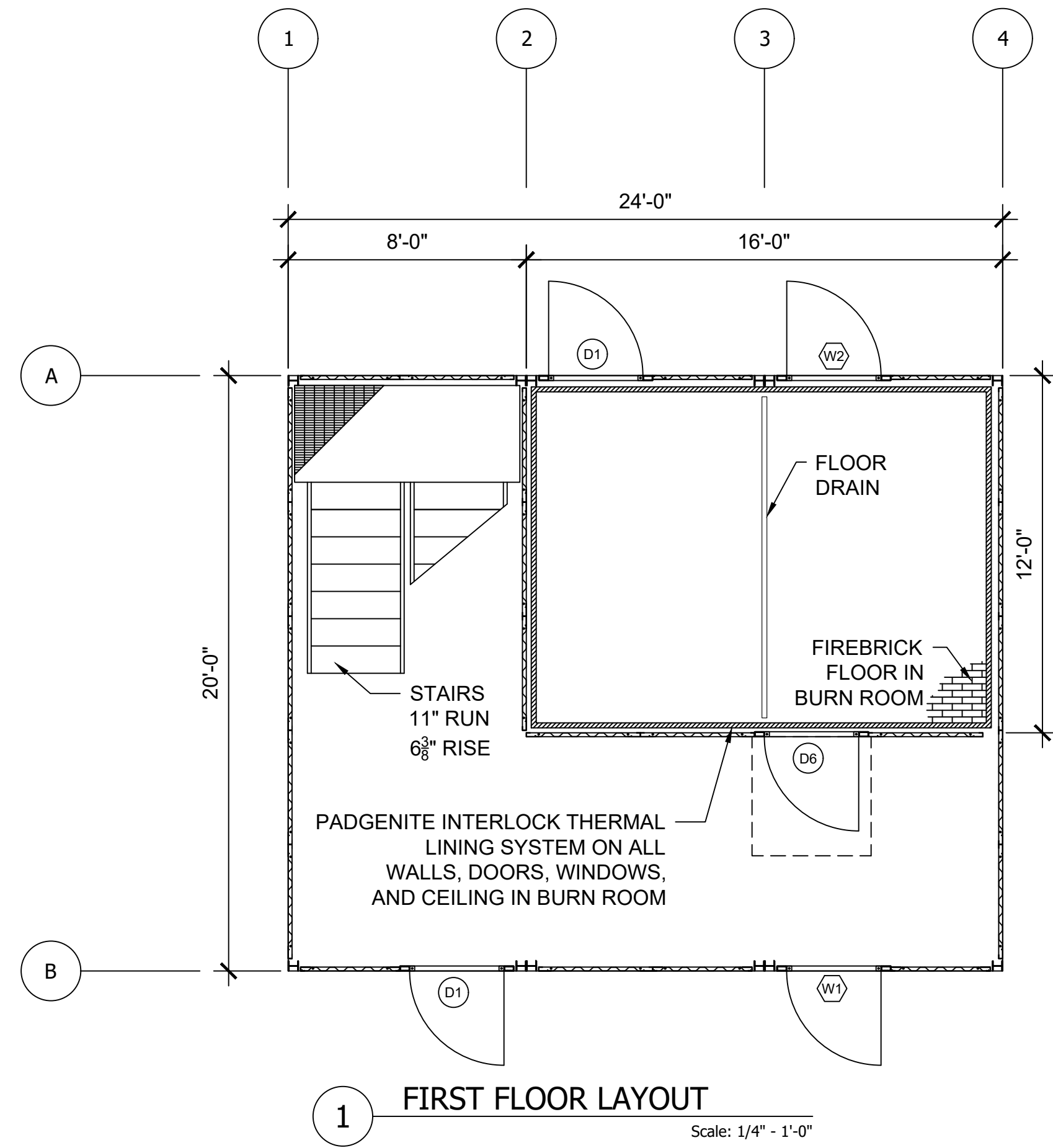
COVER PAGE

0



A DIV. OF JAHNKE AND SONS CONSTRUCTION, INC.  
519 DUCK RD GRANDVIEW, MO 64030  
TEL. 913-385-3663 info@trainingtowers.com  
TOLL FREE 1-800-351-2525 www.trainingtowers.com

**MODx - M  
FIRE TRAINING SIMULATOR**  
FIRE DEPARTMENT TRAINING SIMULATOR



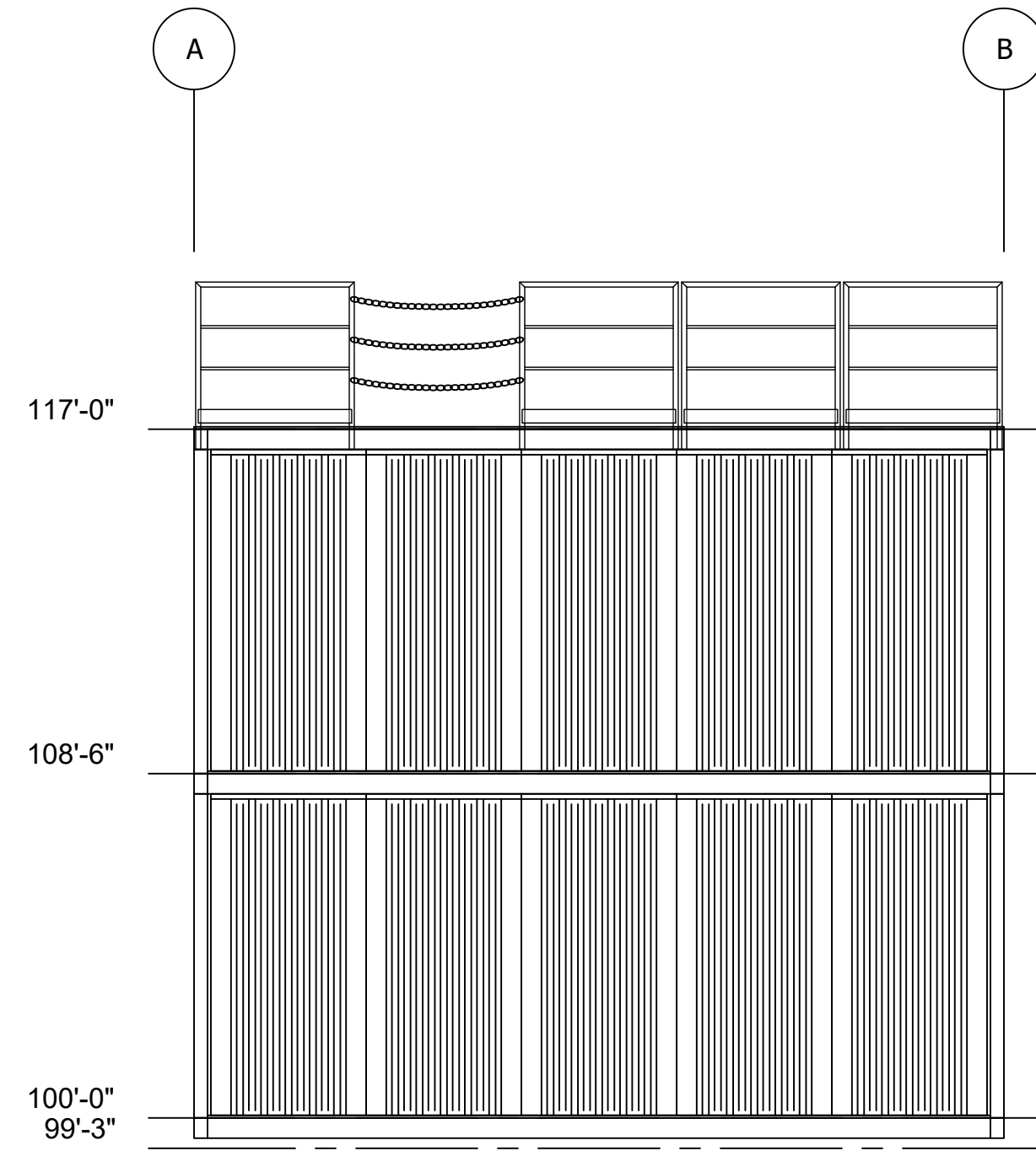
**MODx - M**  
**FIRE TRAINING SIMULATOR**  
FIRE DEPARTMENT TRAINING SIMULATOR

**MODULAR BUILDING PROTECTED BY U.S. Pat. No. 11,276,323**

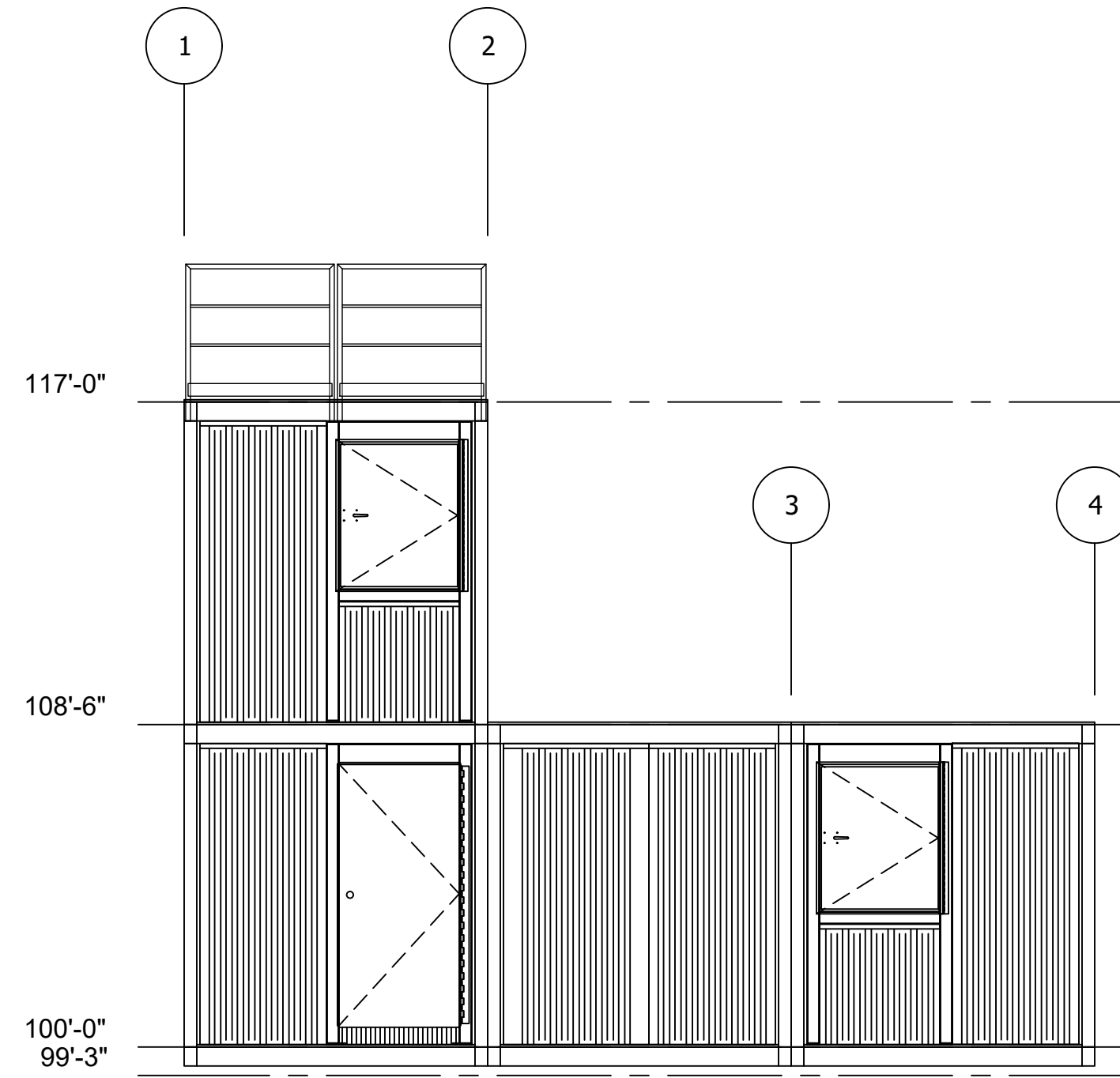
THESE DRAWINGS, SPECIFICATIONS, IDEAS, DESIGNS, AND ARRANGEMENTS ARE AND SHALL REMAIN THE PROPERTY OF JAHNKE AND SONS CONSTRUCTION AND NO PART THEREOF SHALL BE COPIED, REPRODUCED, OR DISTRIBUTED WITHOUT WRITTEN CONSENT OF JAHNKE AND SONS CONSTRUCTION.

PROJECT NUMBER:	00-W-000	REVISION DATES:
PROJECT DIRECTOR:	CM	1
DRAWN BY:	JPK	2
REVIEWED BY:	JPK	3
PRINT DATE:	00-00-00	4

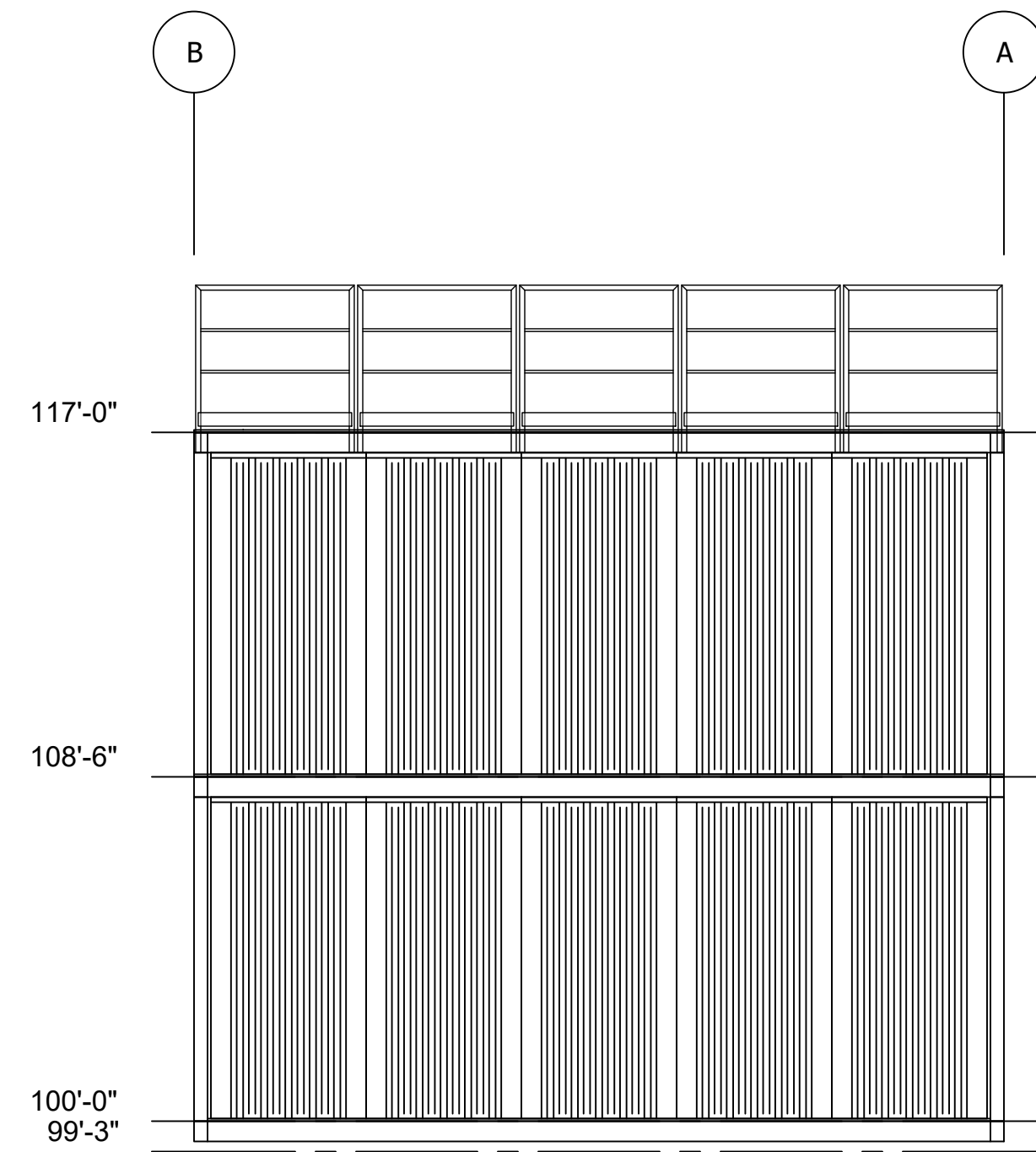
FIRST FLOOR, SECOND FLOOR, AND ROOF PLANS



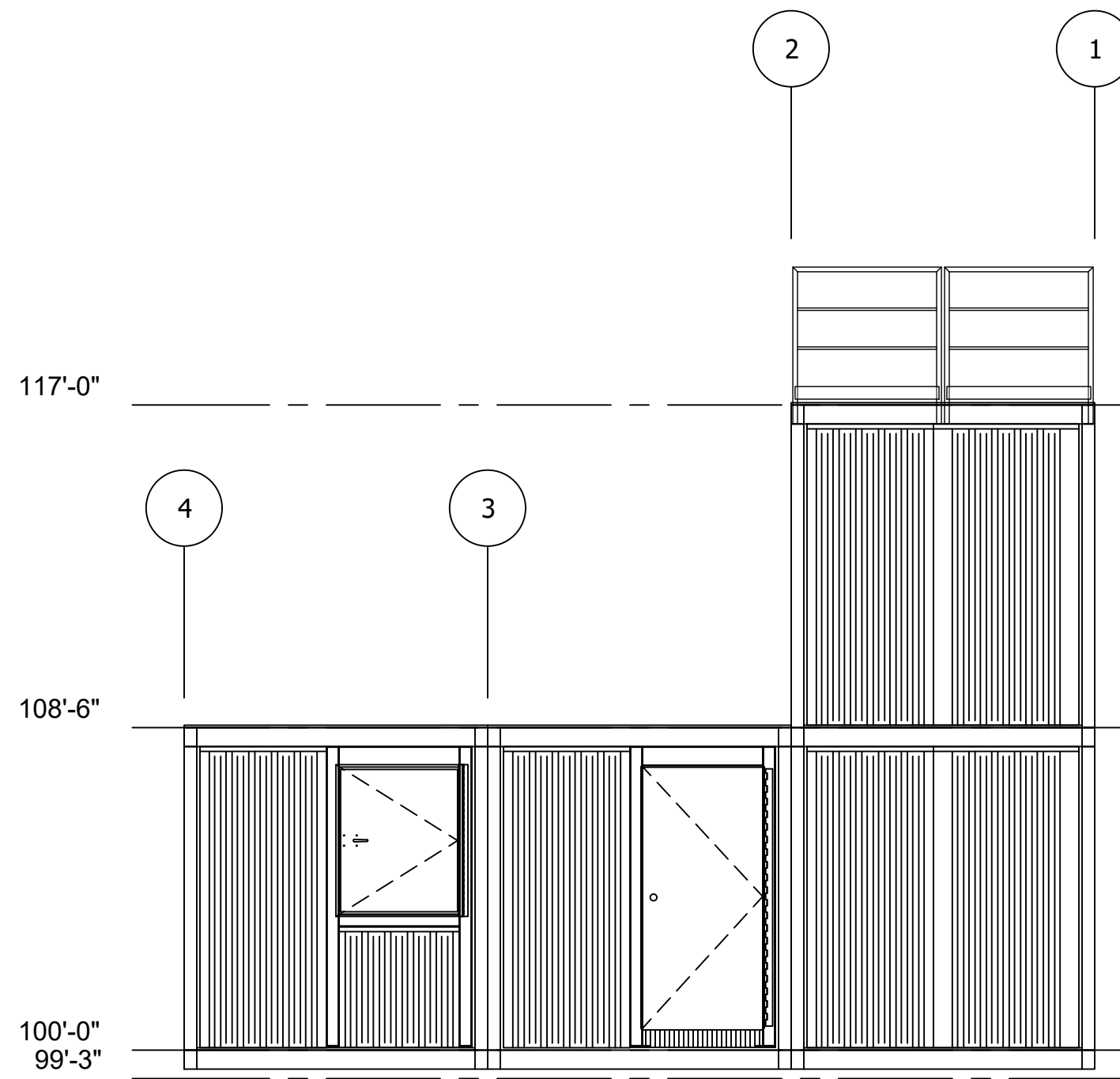
**B LEFT SIDE ELEVATION**  
Scale: 1/4" = 1'-0"



**A FRONT SIDE ELEVATION**  
Scale: 1/4" = 1'-0"



**D RIGHT SIDE ELEVATION**  
Scale: 1/4" = 1'-0"



**C REAR SIDE ELEVATION**  
Scale: 1/4" = 1'-0"

**MODx - M**  
**FIRE TRAINING SIMULATOR**  
FIRE DEPARTMENT TRAINING SIMULATOR

**MODULAR BUILDING  
PROTECTED BY  
U.S. Pat. No. 11,276,323**

THESE DRAWINGS, SPECIFICATIONS, IDEAS, DESIGNS, AND ARRANGEMENTS ARE AND SHALL REMAIN THE PROPERTY OF JAHNKE AND SONS CONSTRUCTION AND NO PART THEREOF SHALL BE COPIED, REPRODUCED, OR DISTRIBUTED WITHOUT WRITTEN CONSENT OF JAHNKE AND SONS CONSTRUCTION.

PROJECT NUMBER:	00-W-000	REVISION DATES
PROJECT DIRECTOR:	CM	2
DRAWN BY:	JPA	3
REVIEWED BY:		4
PRINT DATE:	00-00-00	

FRONT SIDE, LEFT SIDE  
RIGHT SIDE, AND REAR SIDE  
ELEVATIONS