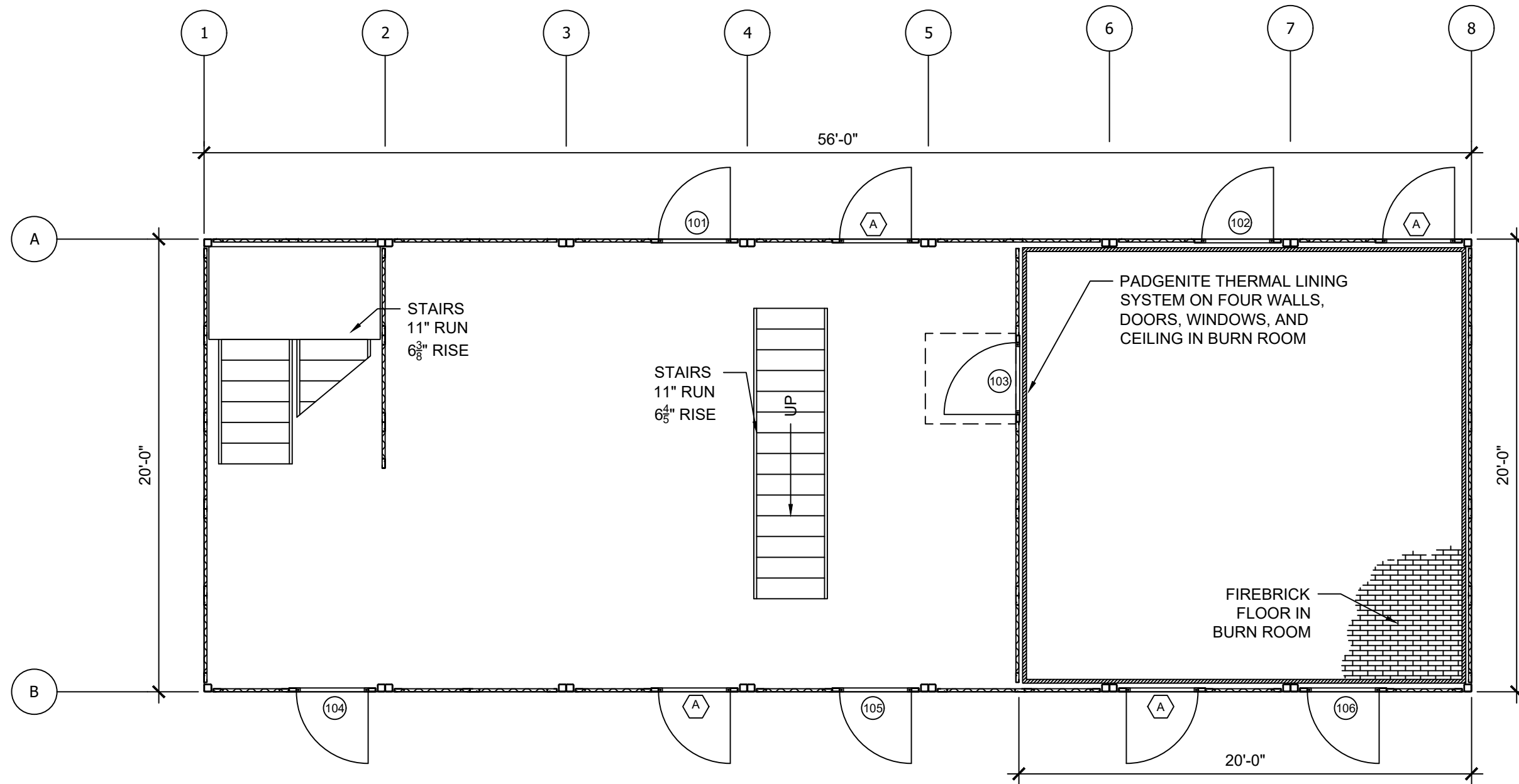


**MODx - X SERIES
FIRE DEPARTMENT**

**PATENT
PENDING**

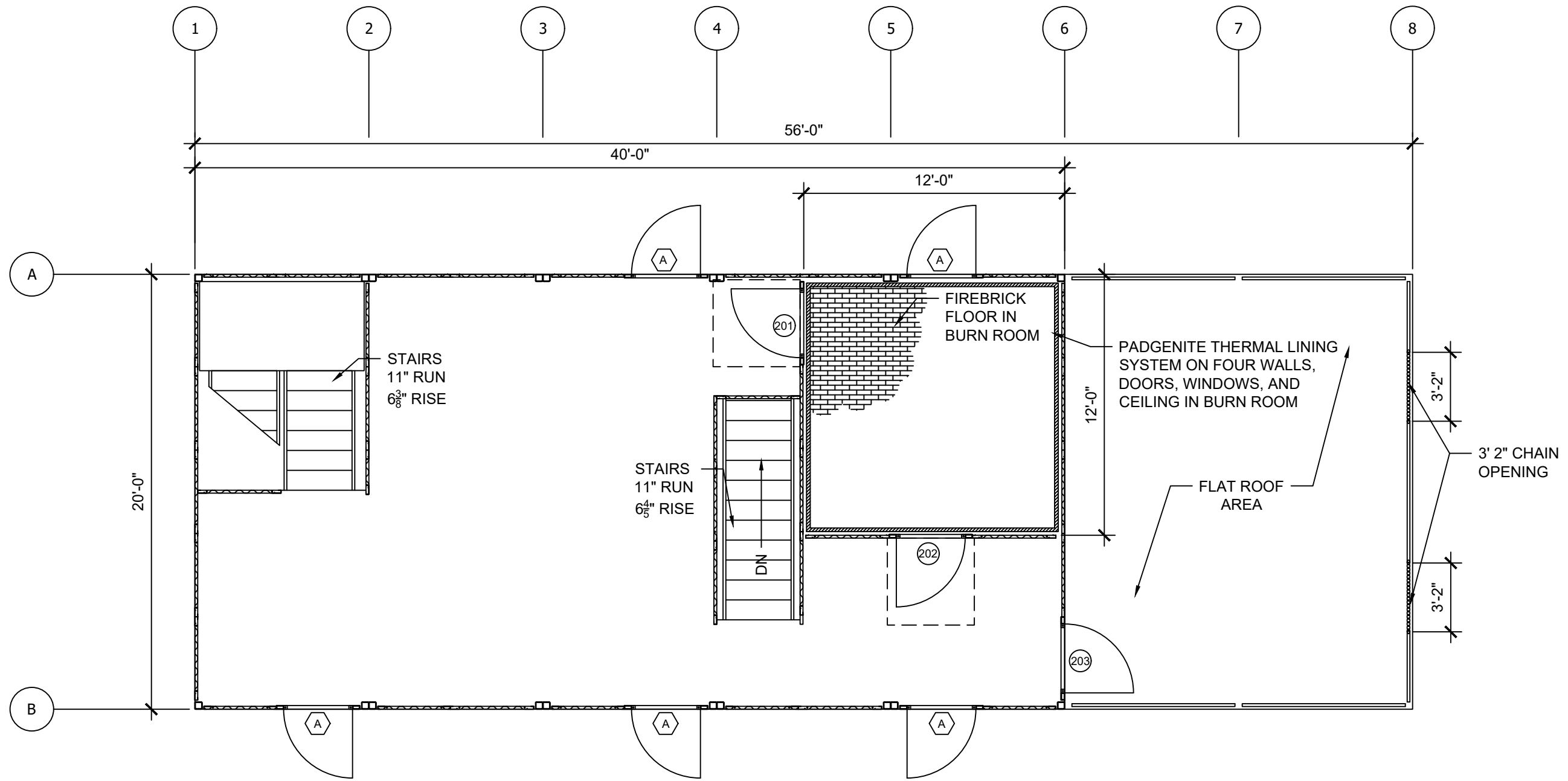
| | | | |
|---|----------------------------|--------------------------|----------------|
| THESE DRAWINGS, SPECIFICATIONS, IDEAS, DESIGNS, AND ARRANGEMENTS ARE AND SHALL REMAIN THE PROPERTY OF JAHNKE AND SONS CONSTRUCTION AND NO PART THEREOF SHALL BE COPIED, REPRODUCED, OR DISTRIBUTED WITHOUT WRITTEN CONSENT OF JAHNKE AND SONS CONSTRUCTION. | ALL MEASUREMENTS IN INCHES | JAHNKE AND SONS CONST | |
| | ANGULAR TOL: ± 2m | 9130 FLINT ST | |
| | DIM. TOL: ± 1/16 | OVERLAND PARK, KS | |
| | MATERIAL: A36/A500S | PROJECT NUMBER: 19-W-000 | REVISION DATES |
| FINISH: HOT DIPPED GALV. US0 | PROJECT NAME: MODx - X | 1 | |
| SHEET NO.: | DRAWN BY: JPK | 2 | |
| | REVIEWED BY: | 3 | |
| | PRINT DATE: 5-29-19 | 4 | |



1 FIRST FLOOR LAYOUT
Scale: NTS

**PATENT
PENDING**

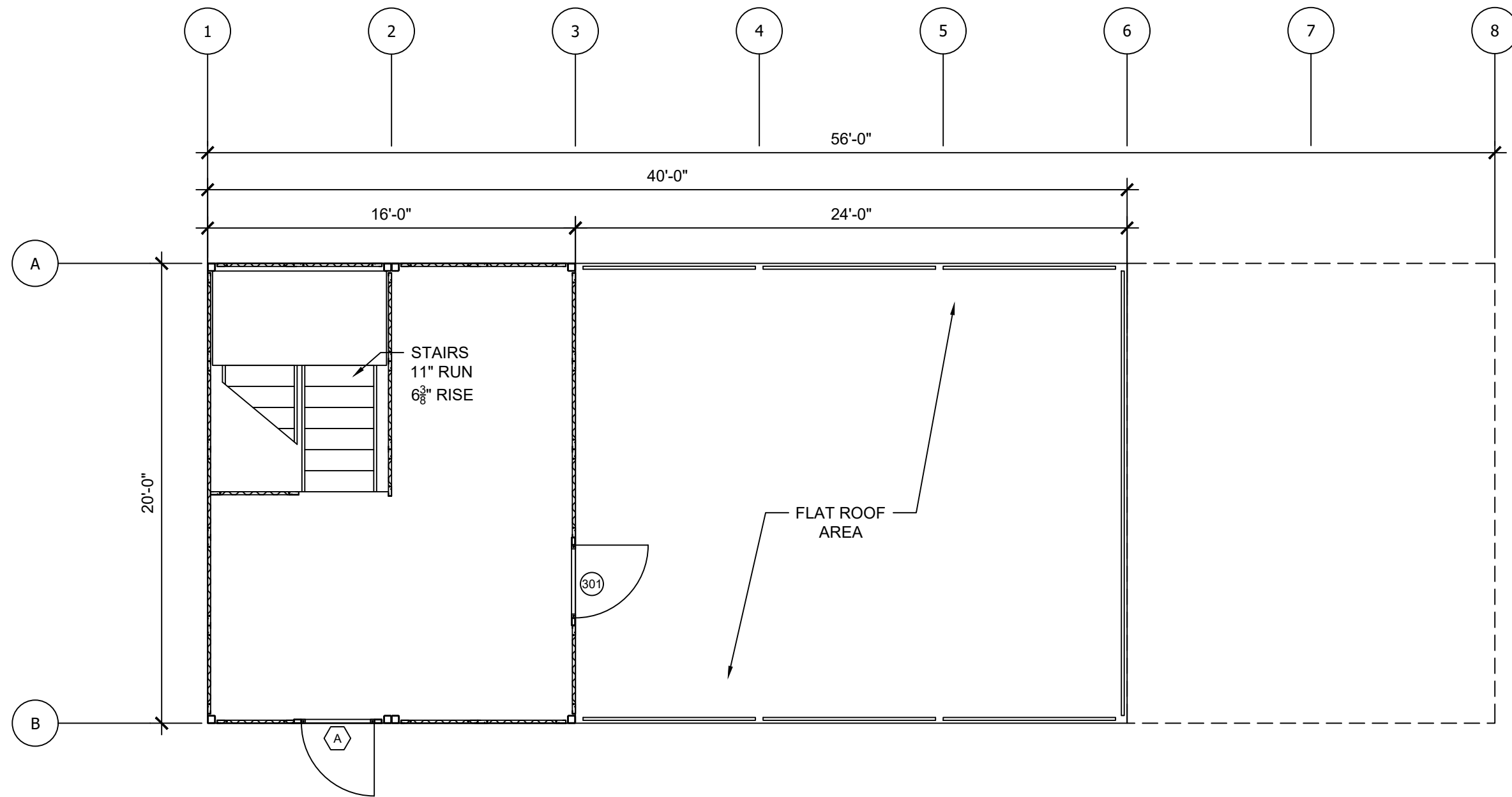
| | | | |
|---|----------------------------|--------------------------|----------------|
| THESE DRAWINGS, SPECIFICATIONS, IDEAS, DESIGNS, AND ARRANGEMENTS ARE AND SHALL REMAIN THE PROPERTY OF JAHNKE AND SONS CONSTRUCTION AND NO PART THEREOF SHALL BE COPIED, REPRODUCED, OR DISTRIBUTED WITHOUT WRITTEN CONSENT OF JAHNKE AND SONS CONSTRUCTION. | ALL MEASUREMENTS IN INCHES | JAHNKE AND SONS CONST | |
| | ANGULAR TOL: ± 2m | 9130 FLINT ST | |
| | DIM. TOL: ± 1/16 | OVERLAND PARK, KS | |
| | MATERIAL: A36/A500S | PROJECT NUMBER: 19-W-000 | REVISION DATES |
| FINISH: HOT DIPPED GALV. USO | PROJECT NAME: MODx - X | 1 | |
| SHEET NO.: | DRAWN BY: JPK | 2 | |
| | REVIEWED BY: | 3 | |
| | PRINT DATE: 5-29-19 | 4 | |



2 SECOND FLOOR LAYOUT
Scale: NTS

**PATENT
PENDING**

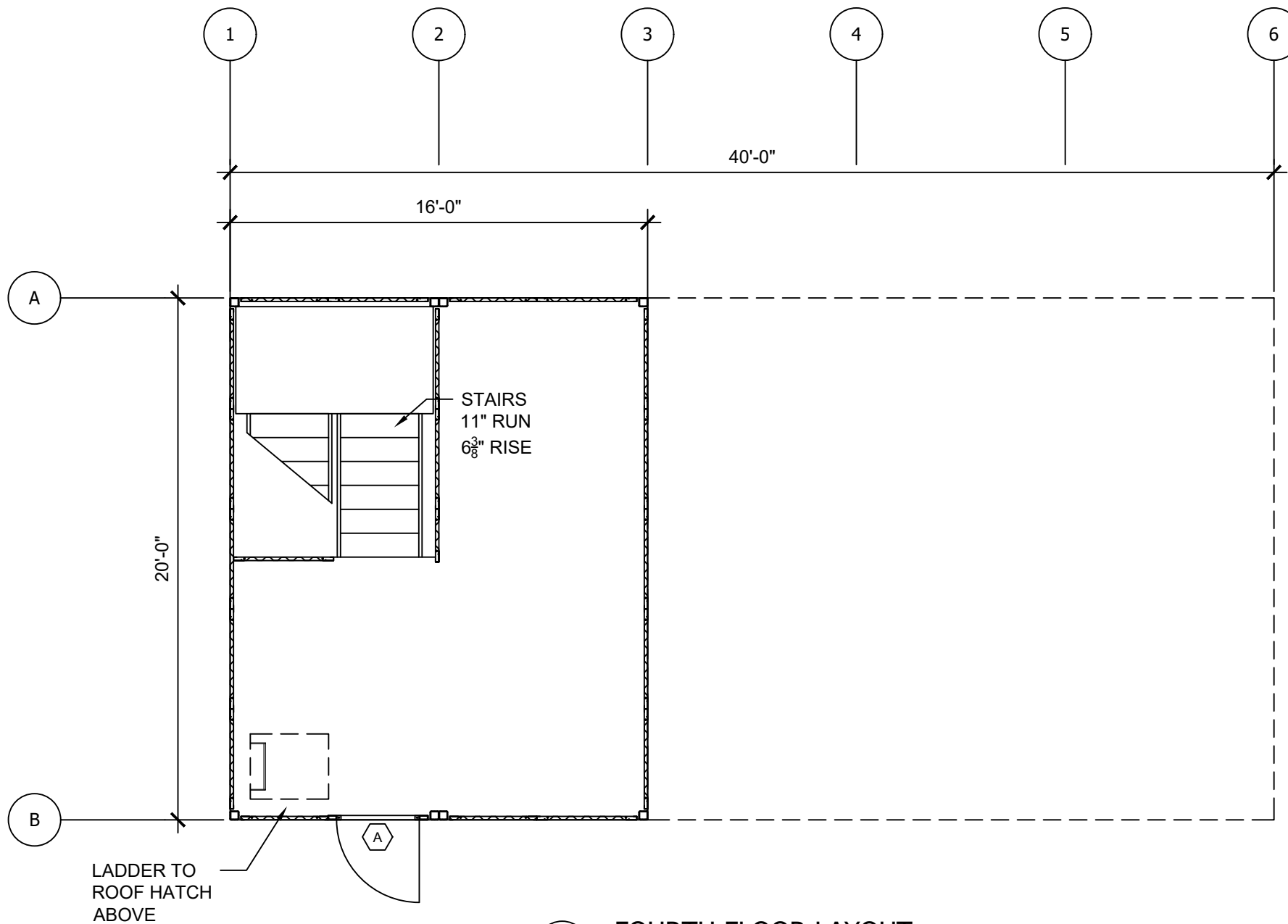
| | | | | |
|---|------------------------------|--------------------------|----------------|--|
| THESE DRAWINGS, SPECIFICATIONS, IDEAS, DESIGNS, AND ARRANGEMENTS ARE AND SHALL REMAIN THE PROPERTY OF JAHNKE AND SONS CONSTRUCTION AND NO PART THEREOF SHALL BE COPIED, REPRODUCED, OR DISTRIBUTED WITHOUT WRITTEN CONSENT OF JAHNKE AND SONS CONSTRUCTION. | ALL MEASUREMENTS IN INCHES | JAHNKE AND SONS CONST | | |
| | ANGULAR TOL: ± 2m | 9130 FLINT ST | | |
| | DIM. TOL: ± 1/16 | OVERLAND PARK, KS | | |
| | MATERIAL: A36/A500S | PROJECT NUMBER: 19-W-000 | REVISION DATES | |
| | FINISH: HOT DIPPED GALV. USO | PROJECT NAME: MODx - X | 1 | |
| SHEET NO.: | DRAWN BY: JPK | 2 | | |
| | REVIEWED BY: | 3 | | |
| | PRINT DATE: 5-29-19 | 4 | | |



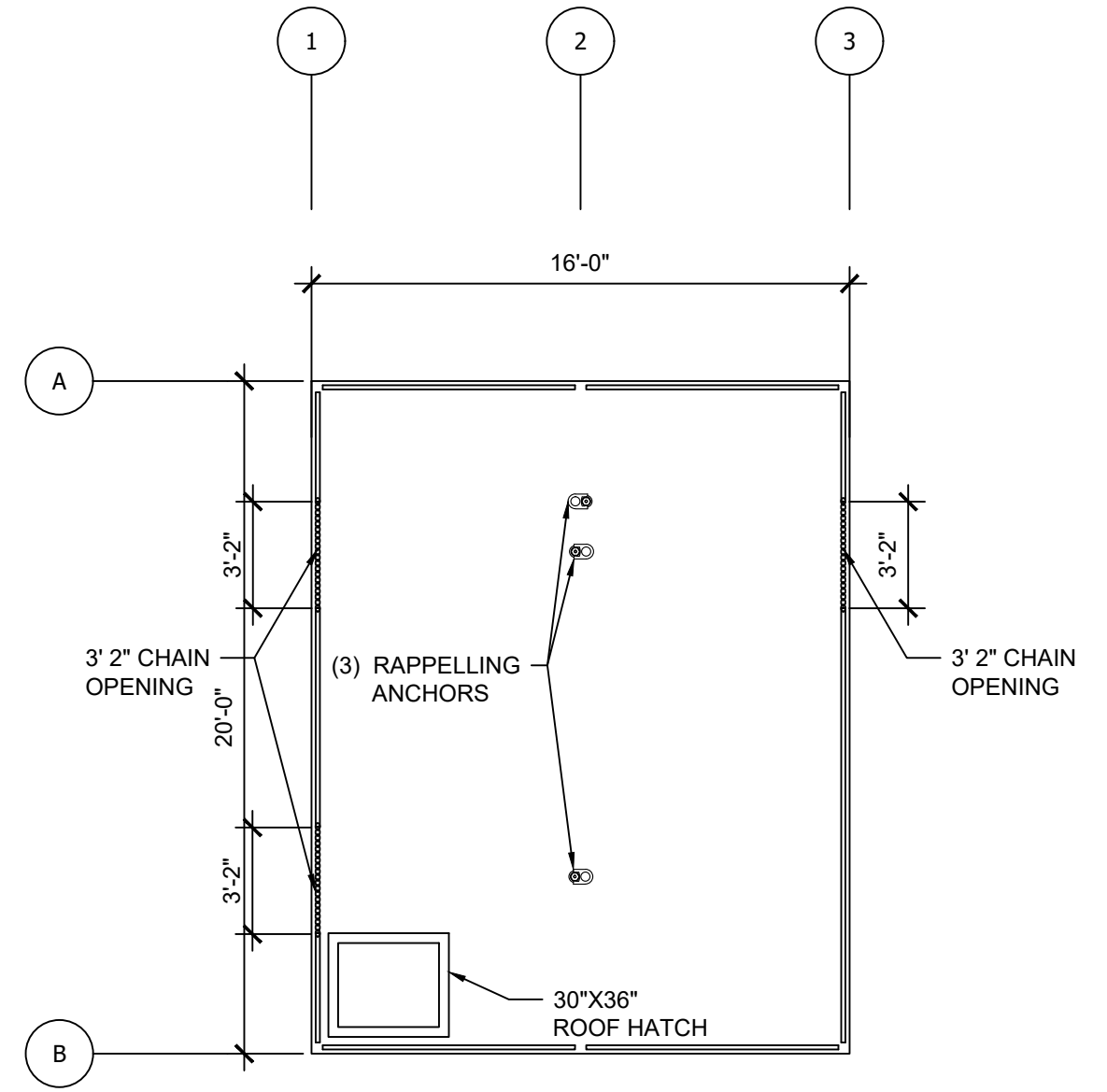
3 THIRD FLOOR LAYOUT
Scale: NTS

**PATENT
PENDING**

| | | | |
|--|----------------------------|--------------------------|----------------|
| <small>THESE DRAWINGS, SPECIFICATIONS, IDEAS, DESIGNS, AND ARRANGEMENTS ARE AND SHALL REMAIN THE PROPERTY OF JAHNKE AND SONS CONSTRUCTION AND NO PART THEREOF SHALL BE COPIED, REPRODUCED, OR DISTRIBUTED WITHOUT WRITTEN CONSENT OF JAHNKE AND SONS CONSTRUCTION.</small> | ALL MEASUREMENTS IN INCHES | JAHNKE AND SONS CONST | |
| | ANGULAR TOL: ± 2m | 9130 FLINT ST | |
| | DIM. TOL: ± 1/16 | OVERLAND PARK, KS | |
| | MATERIAL: A36/A500S | PROJECT NUMBER: 19-W-000 | REVISION DATES |
| FINISH: HOT DIPPED GALV. USO | PROJECT NAME: MODx - X | 1 | |
| SHEET NO.: | DRAWN BY: JPK | 2 | |
| | REVIEWED BY: | 3 | |
| | PRINT DATE: 5-29-19 | 4 | |



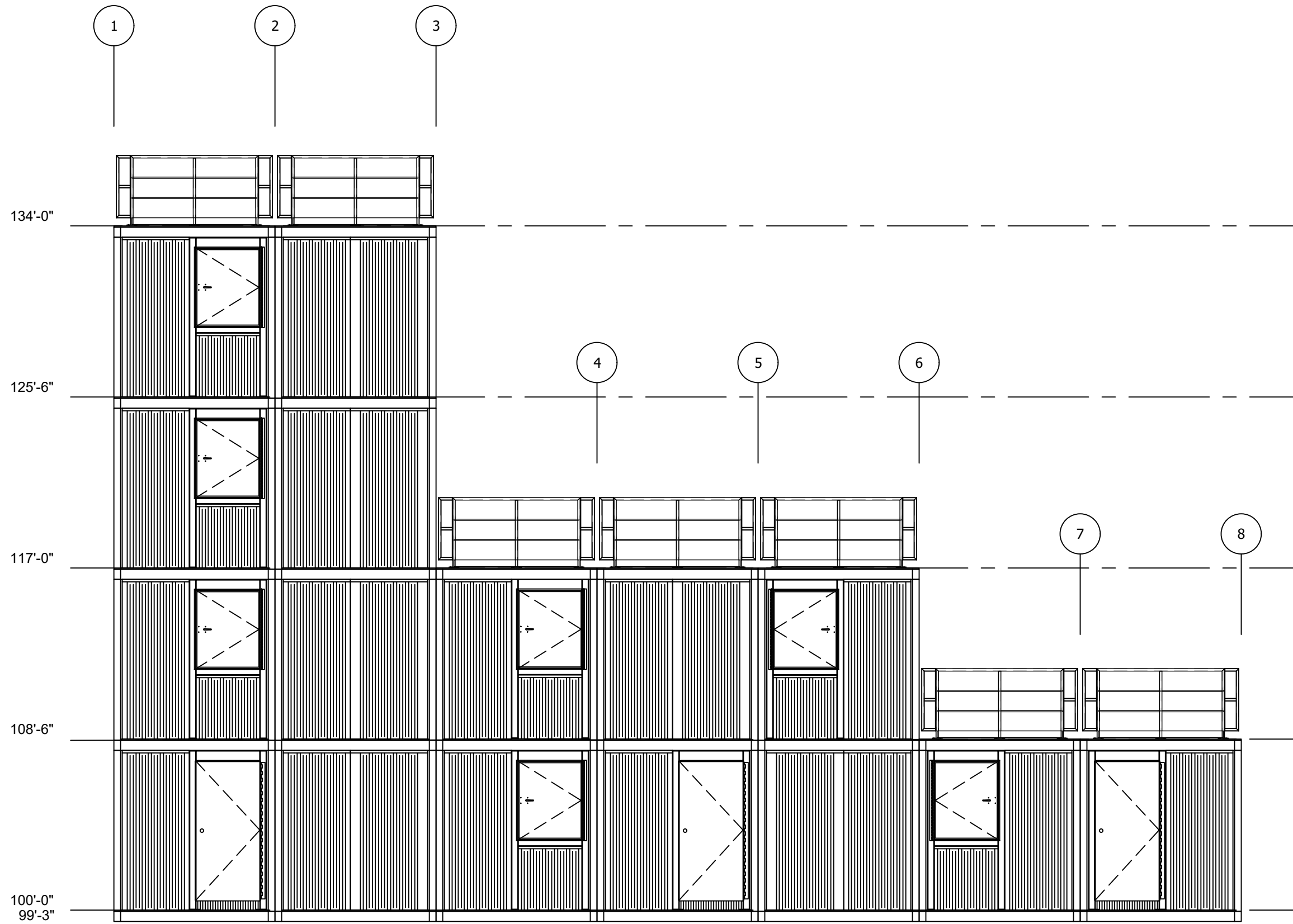
4 FOURTH FLOOR LAYOUT
Scale: NTS



5 ROOF LAYOUT
Scale: NTS

**PATENT
PENDING**

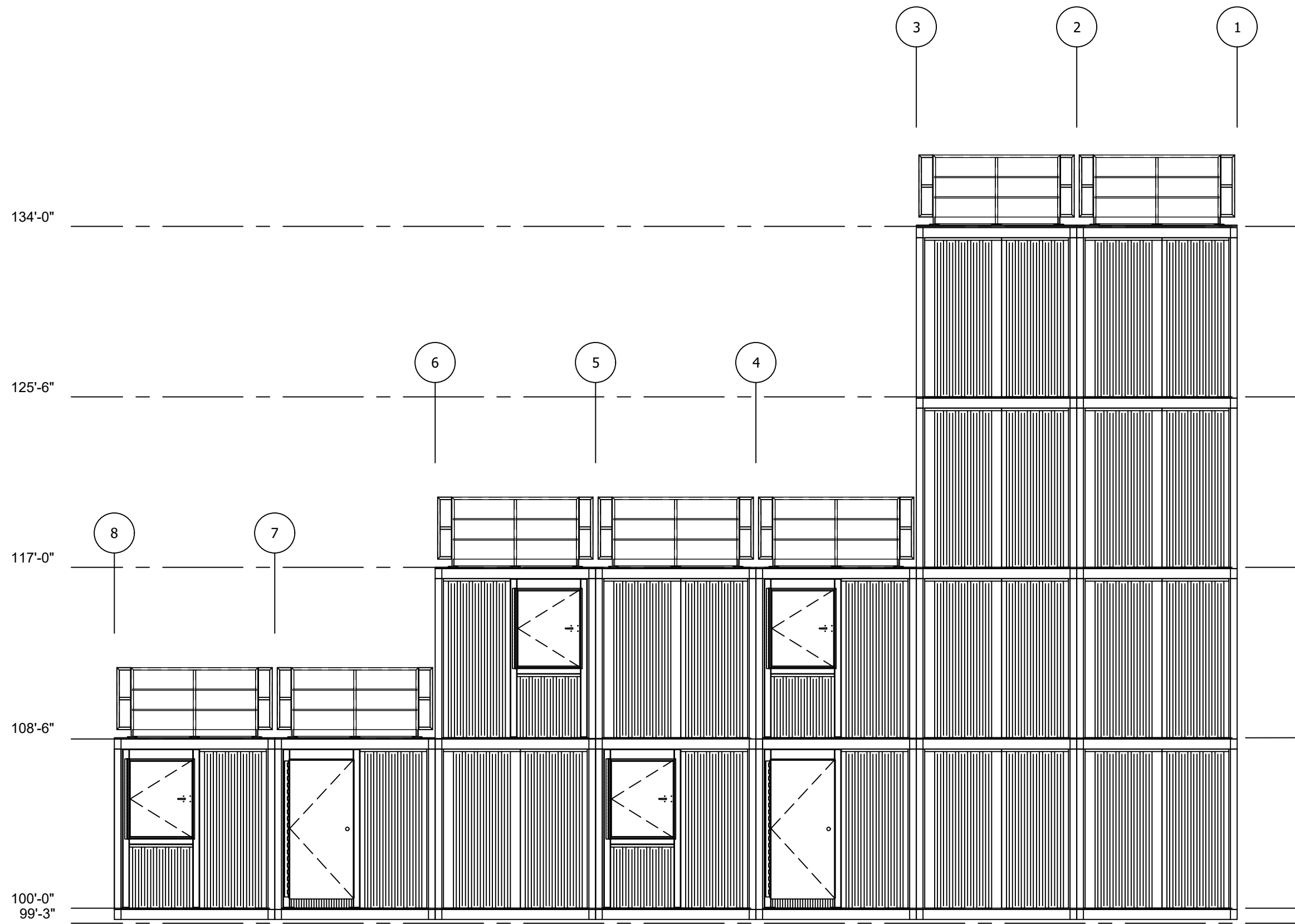
| | | | |
|---|----------------------------|--------------------------|----------------|
| THESE DRAWINGS, SPECIFICATIONS, IDEAS, DESIGNS, AND ARRANGEMENTS ARE AND SHALL REMAIN THE PROPERTY OF JAHNKE AND SONS CONSTRUCTION AND NO PART THEREOF SHALL BE COPIED, REPRODUCED, OR DISTRIBUTED WITHOUT WRITTEN CONSENT OF JAHNKE AND SONS CONSTRUCTION. | ALL MEASUREMENTS IN INCHES | JAHNKE AND SONS CONST | |
| | ANGULAR TOL: ± 2m | 9130 FLINT ST | |
| | DIM. TOL: ± 1/16 | OVERLAND PARK, KS | |
| | MATERIAL: A36/A500S | PROJECT NUMBER: 19-W-000 | REVISION DATES |
| FINISH: HOT DIPPED GALV. USO | PROJECT NAME: MODx - X | 1 | |
| SHEET NO.: | DRAWN BY: JPK | 2 | |
| | REVIEWED BY: | 3 | |
| | PRINT DATE: 5-29-19 | 4 | |



A FRONT SIDE ELEVATION
Scale: NTS

**PATENT
PENDING**

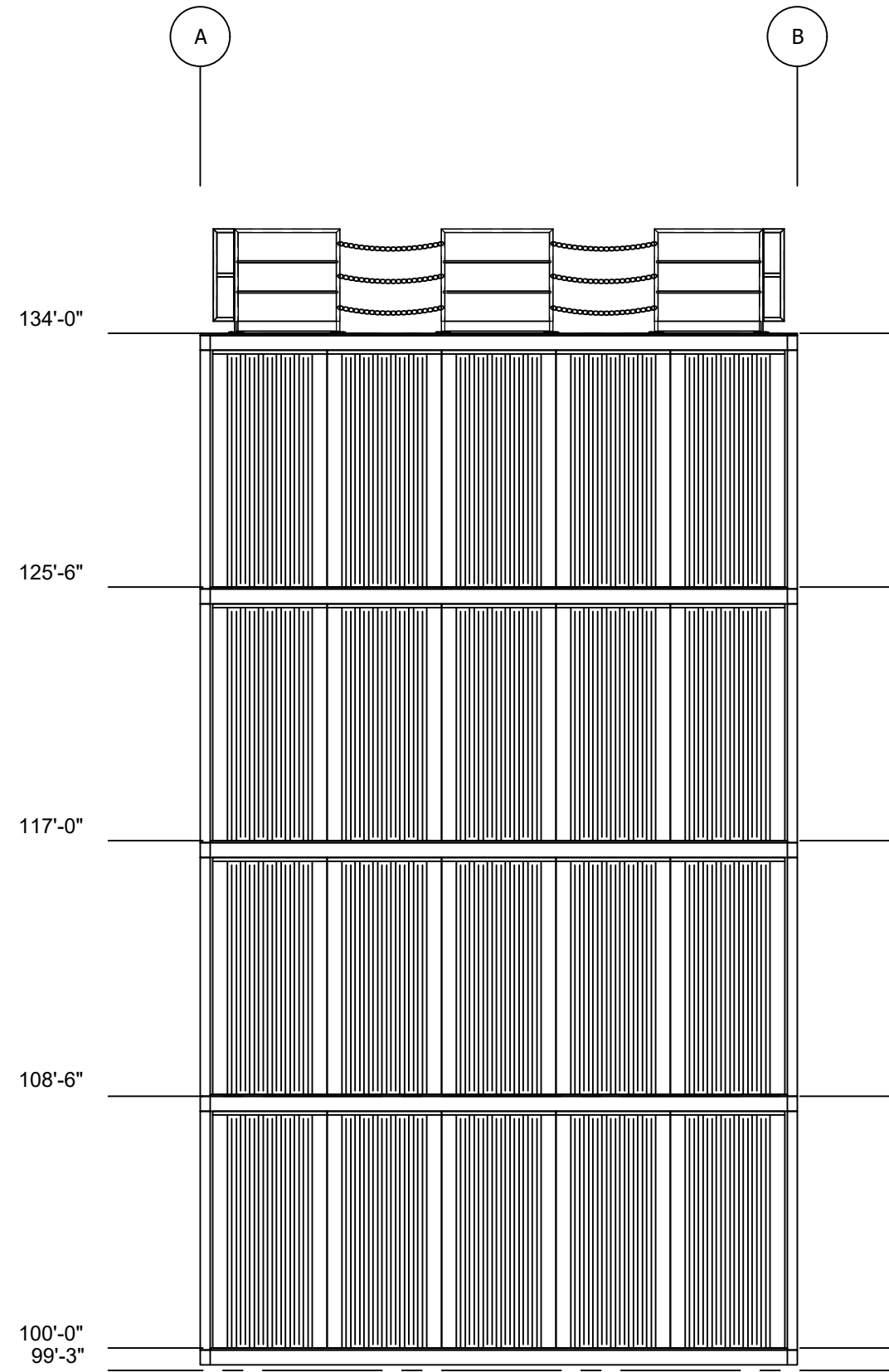
| | | | |
|---|------------------------------|--------------------------|----------------|
| THESE DRAWINGS, SPECIFICATIONS, IDEAS, DESIGNS, AND ARRANGEMENTS ARE AND SHALL REMAIN THE PROPERTY OF JAHNKE AND SONS CONSTRUCTION AND NO PART THEREOF SHALL BE COPIED, REPRODUCED, OR DISTRIBUTED WITHOUT WRITTEN CONSENT OF JAHNKE AND SONS CONSTRUCTION. | ALL MEASUREMENTS IN INCHES | JAHNKE AND SONS CONST | |
| | ANGULAR TOL: ± 2m | 9130 FLINT ST | |
| | DIM. TOL: ± 1/16 | OVERLAND PARK, KS | |
| | MATERIAL: A36/A500S | PROJECT NUMBER: 19-W-000 | REVISION DATES |
| | FINISH: HOT DIPPED GALV. USO | PROJECT NAME: MODx - X | 1 |
| SHEET NO.: | DRAWN BY: JPK | 2 | |
| | REVIEWED BY: | 3 | |
| | PRINT DATE: 5-29-19 | 4 | |



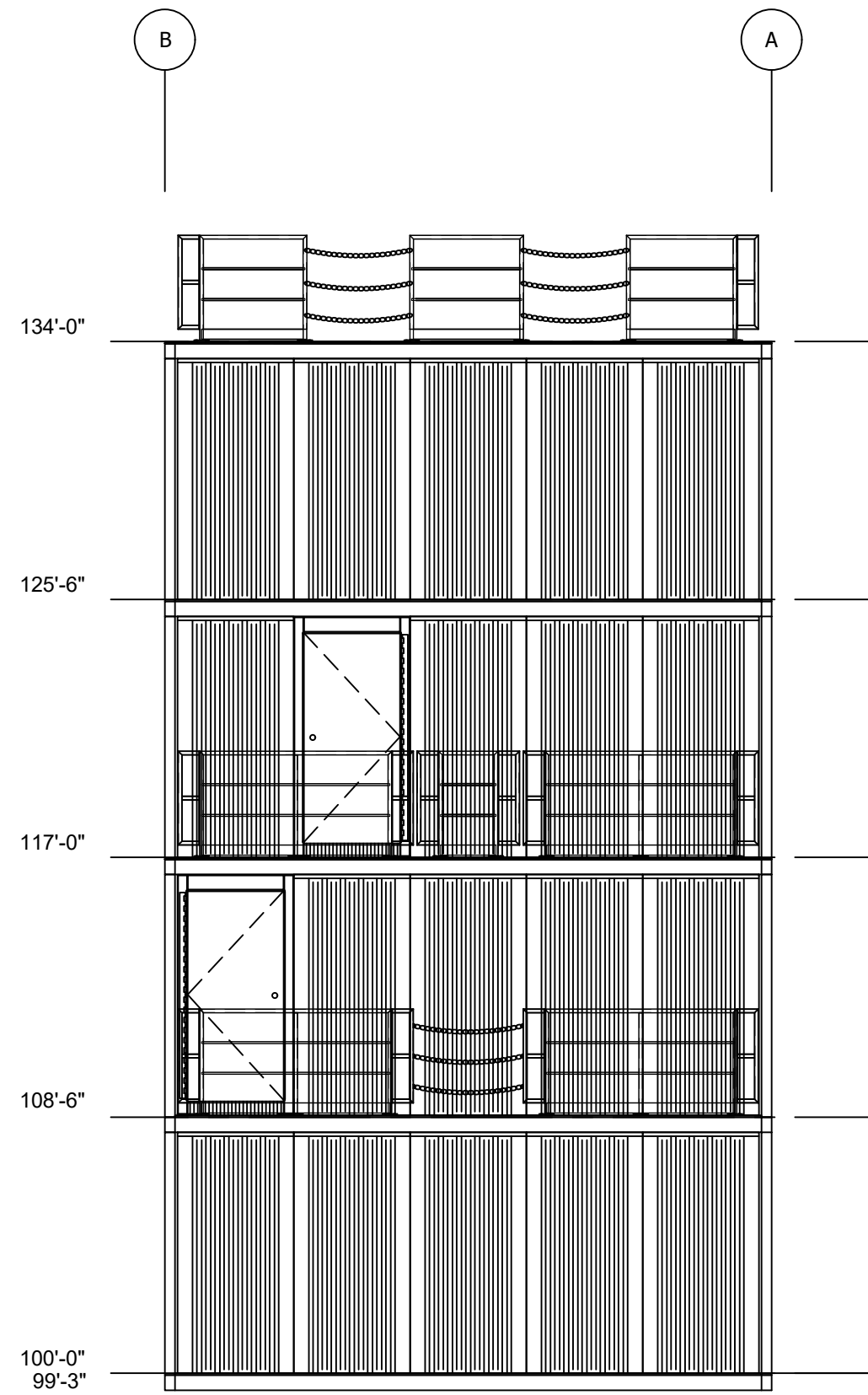
C REAR SIDE ELEVATION
Scale: NTS

**PATENT
PENDING**

| | | | |
|---|----------------------------|--------------------------|----------------|
| THESE DRAWINGS, SPECIFICATIONS, IDEAS, DESIGNS, AND ARRANGEMENTS ARE AND SHALL REMAIN THE PROPERTY OF JAHNKE AND SONS CONSTRUCTION AND NO PART THEREOF SHALL BE COPIED, REPRODUCED, OR DISTRIBUTED WITHOUT WRITTEN CONSENT OF JAHNKE AND SONS CONSTRUCTION. | ALL MEASUREMENTS IN INCHES | JAHNKE AND SONS CONST | |
| | ANGULAR TOL: ± 2m | 9130 FLINT ST | |
| | DIM. TOL: ± 1/16 | OVERLAND PARK, KS | |
| | MATERIAL: A36/A500S | PROJECT NUMBER: 19-W-000 | REVISION DATES |
| FINISH: HOT DIPPED GALV. USO | PROJECT NAME: MODx - X | 1 | |
| SHEET NO.: | DRAWN BY: JPK | 2 | |
| | REVIEWED BY: | 3 | |
| | PRINT DATE: 5-29-19 | 4 | |



B LEFT SIDE ELEVATION
Scale: NTS



D RIGHT SIDE ELEVATION
Scale: NTS

**PATENT
PENDING**

THESE DRAWINGS, SPECIFICATIONS, IDEAS, DESIGNS, AND ARRANGEMENTS ARE AND SHALL REMAIN THE PROPERTY OF JAHNKE AND SONS CONSTRUCTION AND NO PART THEREOF SHALL BE COPIED, REPRODUCED, OR DISTRIBUTED WITHOUT WRITTEN CONSENT OF JAHNKE AND SONS CONSTRUCTION.

ALL MEASUREMENTS IN INCHES
ANGULAR TOL: ± 2m
DIM. TOL: ± 1/16
MATERIAL: A36/A500S
FINISH: HOT DIPPED GALV. USO
SHEET NO.:

JAHNKE AND SONS CONST
9130 FLINT ST
OVERLAND PARK, KS
PROJECT NUMBER: 19-W-000
PROJECT NAME: MODx - X
DRAWN BY: JPK
REVIEWED BY:
PRINT DATE: 5-29-19

| REVISION DATES | 1 | 2 | 3 | 4 |
|------------------------|---|---|---|---|
| PROJECT NAME: MODx - X | 1 | | | |
| DRAWN BY: JPK | 2 | | | |
| REVIEWED BY: | 3 | | | |
| PRINT DATE: 5-29-19 | 4 | | | |