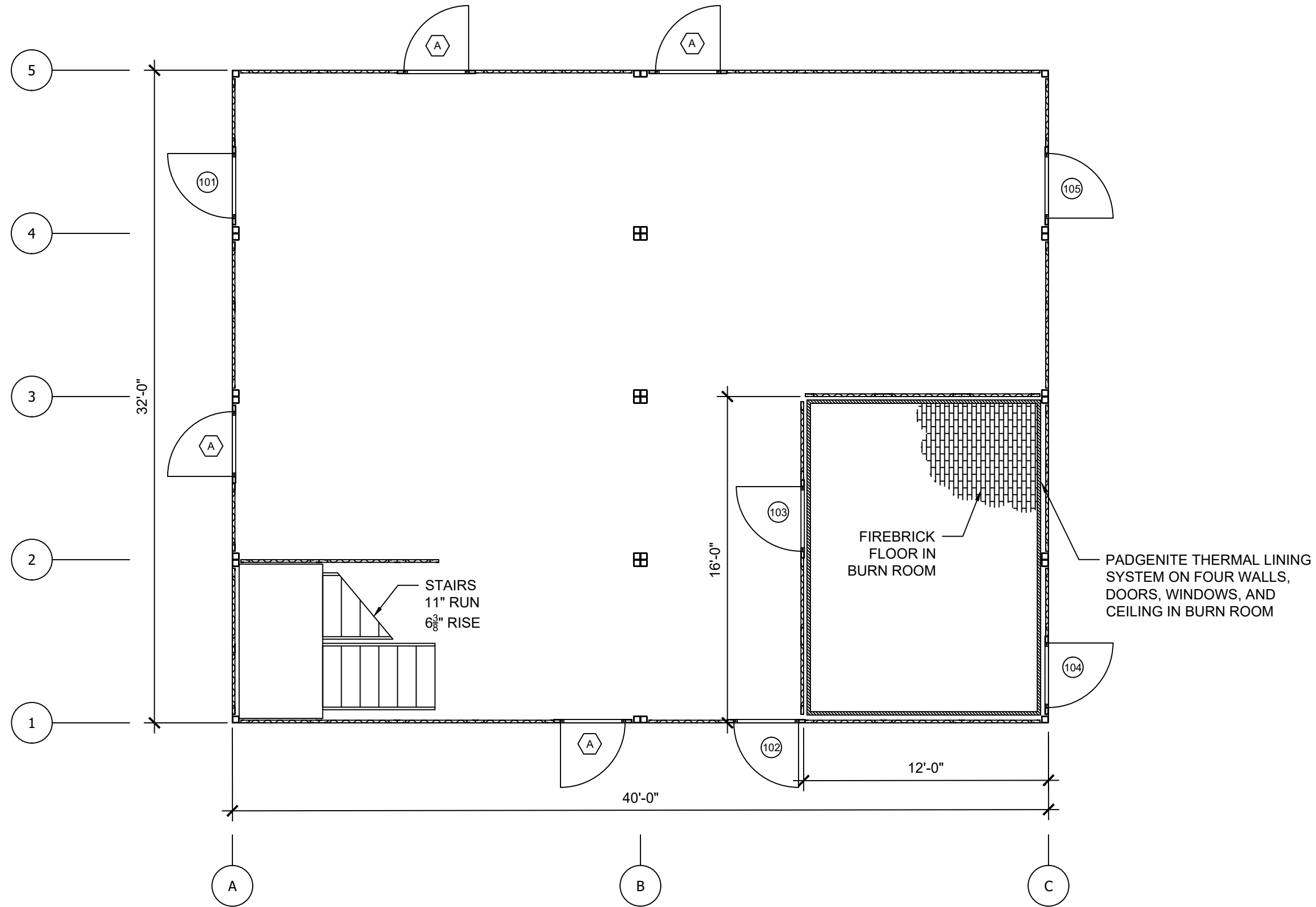


**MODx - D SERIES
FIRE DEPARTMENT**

**PATENT
PENDING**

<small>THESE DRAWINGS, SPECIFICATIONS, IDEAS, DESIGNS, AND ARRANGEMENTS ARE AND SHALL REMAIN THE PROPERTY OF JAHNKE AND SONS CONSTRUCTION AND NO PART THEREOF SHALL BE COPIED, REPRODUCED, OR DISTRIBUTED WITHOUT WRITTEN CONSENT OF JAHNKE AND SONS CONSTRUCTION.</small>	ALL MEASUREMENTS IN INCHES	JAHNKE AND SONS CONST	
	ANGULAR TOL: ± 2m	9130 FLINT ST	
	DIM. TOL: ± 1/16	OVERLAND PARK, KS	
	MATERIAL: A36/A500S	PROJECT NUMBER: 19-W-000	REVISION DATES
	FINISH: HOT DIPPED GALV. US0	PROJECT NAME: MODx - D	1
SHEET NO.:	DRAWN BY: JPK	2	
	REVIEWED BY:	3	
	PRINT DATE: 5-29-19	4	

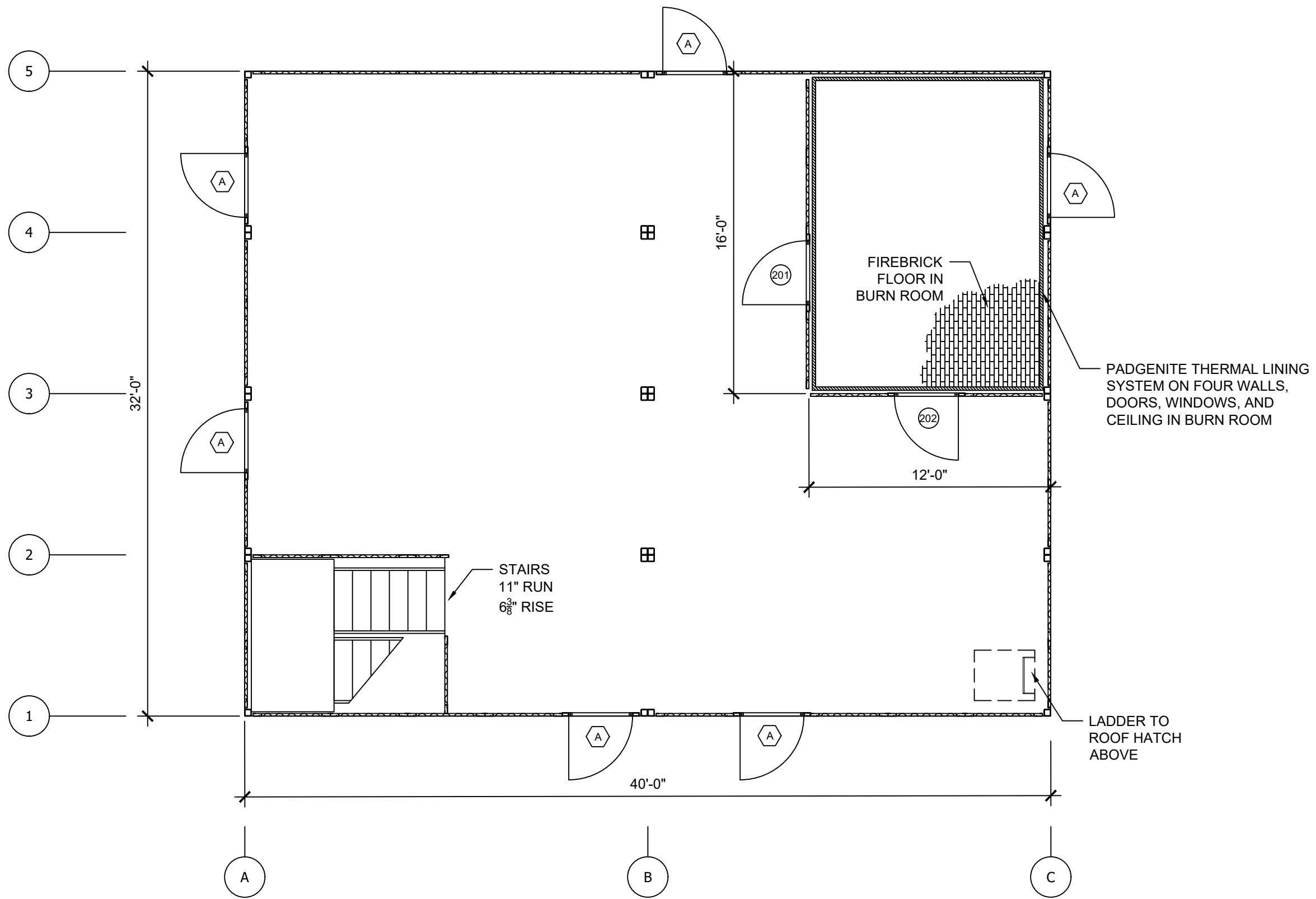


1 FIRST FLOOR LAYOUT

Scale: NTS

**PATENT
PENDING**

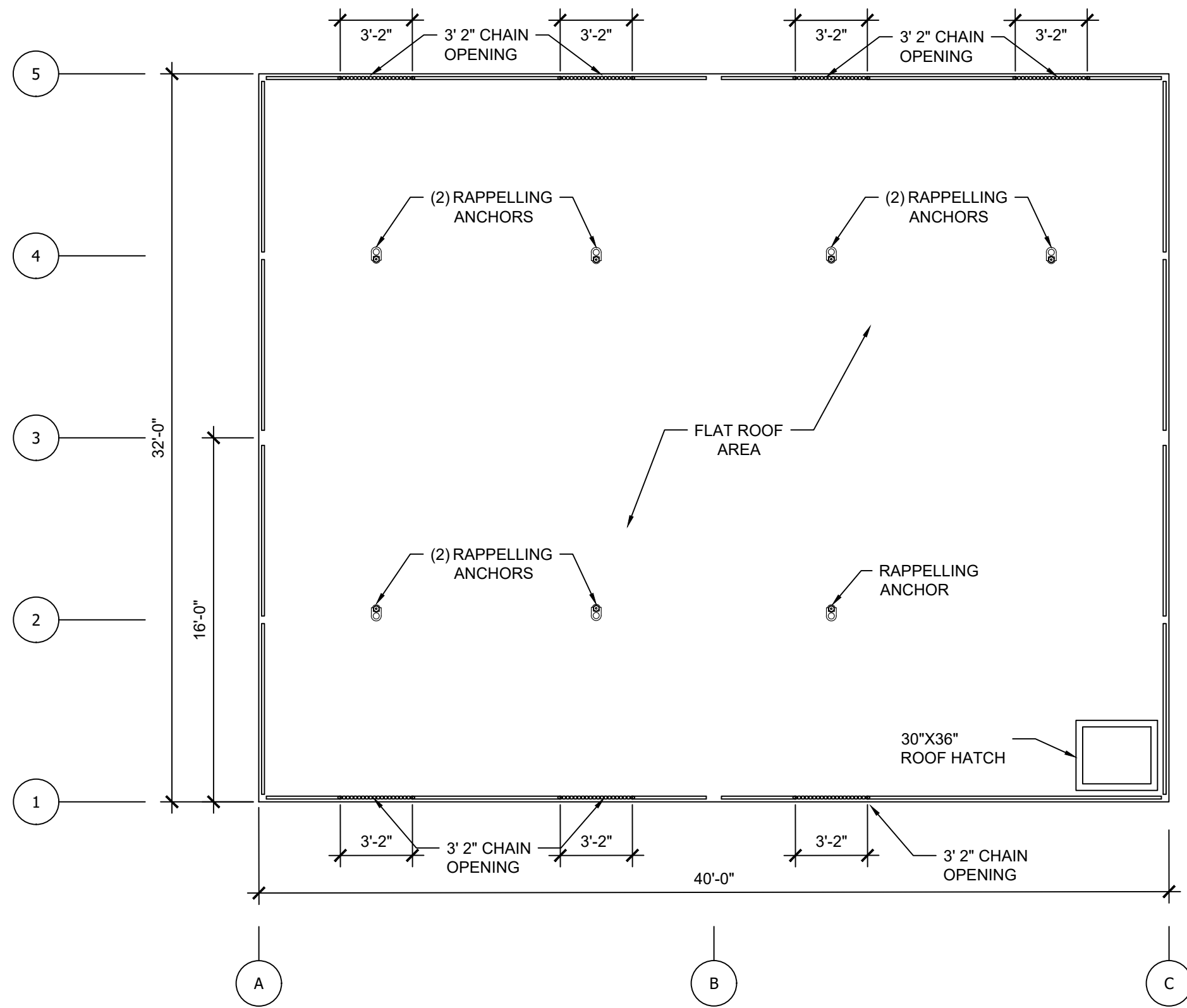
THESE DRAWINGS, SPECIFICATIONS, IDEAS, DESIGNS, AND ARRANGEMENTS ARE AND SHALL REMAIN THE PROPERTY OF JAHNKE AND SONS CONSTRUCTION AND NO PART THEREOF SHALL BE COPIED, REPRODUCED, OR DISTRIBUTED WITHOUT WRITTEN CONSENT OF JAHNKE AND SONS CONSTRUCTION.	ALL MEASUREMENTS IN INCHES	JAHNKE AND SONS CONST	
	ANGULAR TOL: ± 2m	9130 FLINT ST	
	DIM. TOL: ± 1/16	OVERLAND PARK, KS	
	MATERIAL: A36/A500S	PROJECT NUMBER: 19-W-000	REVISION DATES
FINISH: HOT DIPPED GALV. US0	PROJECT NAME: MODx - D	1	
SHEET NO.:	DRAWN BY: JPK	2	
	REVIEWED BY:	3	
	PRINT DATE: 5-29-19	4	



2 SECOND FLOOR LAYOUT
Scale: NTS

PATENT PENDING

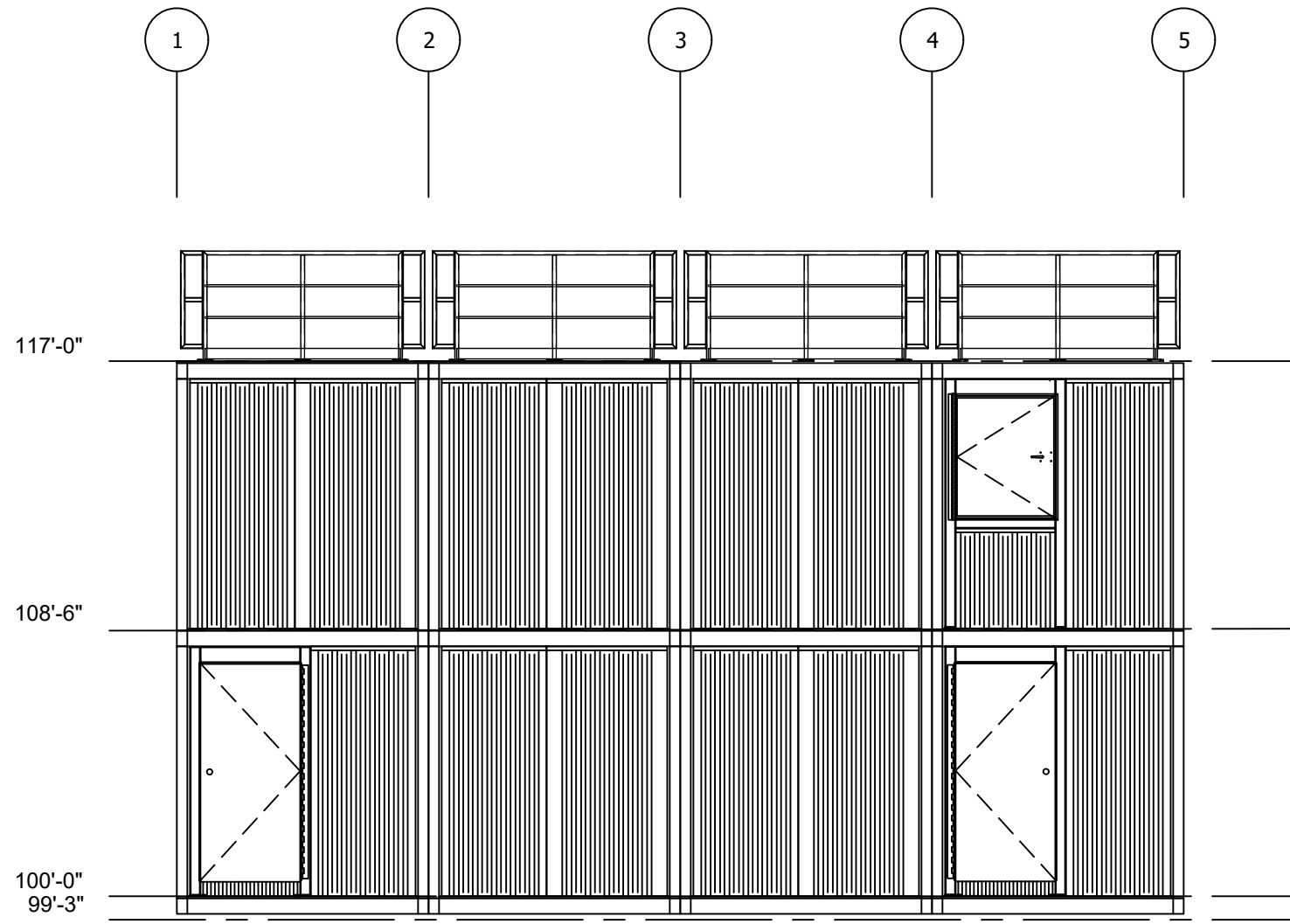
THESE DRAWINGS, SPECIFICATIONS, IDEAS, DESIGNS, AND ARRANGEMENTS ARE AND SHALL REMAIN THE PROPERTY OF JAHNKE AND SONS CONSTRUCTION AND NO PART THEREOF SHALL BE COPIED, REPRODUCED, OR DISTRIBUTED WITHOUT WRITTEN CONSENT OF JAHNKE AND SONS CONSTRUCTION.	ALL MEASUREMENTS IN INCHES	JAHNKE AND SONS CONST		
	ANGULAR TOL: ± 2m	9130 FLINT ST		
	DIM. TOL: ± 1/16	OVERLAND PARK, KS		
	MATERIAL: A36/A500S	PROJECT NUMBER: 19-W-000	REVISION DATES	
	FINISH: HOT DIPPED GALV. USG	PROJECT NAME: MODx - D	1	
SHEET NO.:	DRAWN BY: JPK	2		
	REVIEWED BY:	3		
	PRINT DATE: 5-29-19	4		



3 ROOF LAYOUT
Scale: NTS

**PATENT
PENDING**

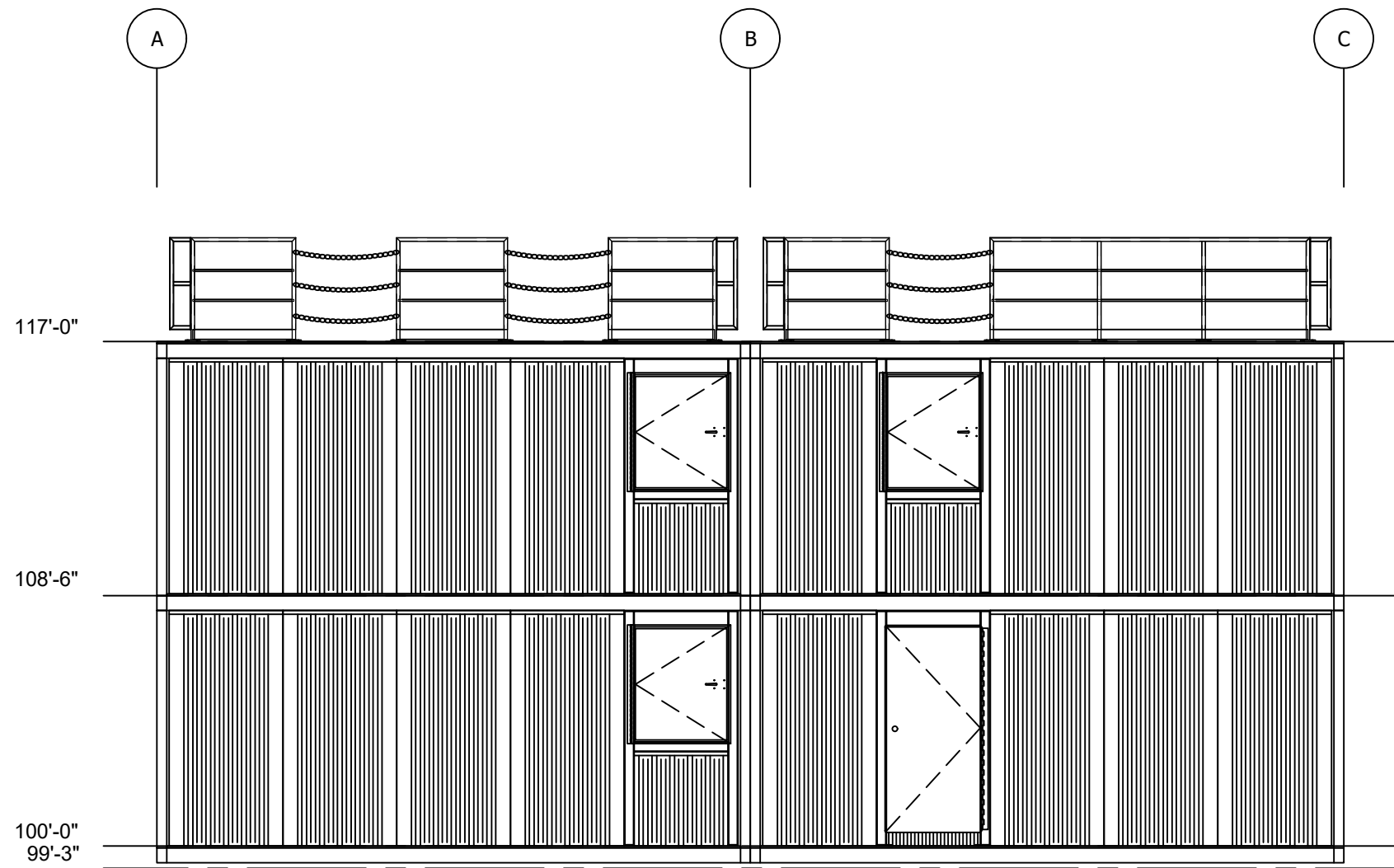
THESE DRAWINGS, SPECIFICATIONS, IDEAS, DESIGNS, AND ARRANGEMENTS ARE AND SHALL REMAIN THE PROPERTY OF JAHNKE AND SONS CONSTRUCTION AND NO PART THEREOF SHALL BE COPIED, REPRODUCED, OR DISTRIBUTED WITHOUT WRITTEN CONSENT OF JAHNKE AND SONS CONSTRUCTION.	ALL MEASUREMENTS IN INCHES	JAHNKE AND SONS CONST	
	ANGULAR TOL: ± 2m	9130 FLINT ST	
	DIM. TOL: ± 1/16	OVERLAND PARK, KS	
	MATERIAL: A36/A500S	PROJECT NUMBER: 19-W-000	REVISION DATES
FINISH: HOT DIPPED GALV. US0	PROJECT NAME: MODx - D	1	
SHEET NO.:	DRAWN BY: JPK	2	
	REVIEWED BY:	3	
	PRINT DATE: 5-29-19	4	



A FRONT SIDE ELEVATION
Scale: NTS

**PATENT
PENDING**

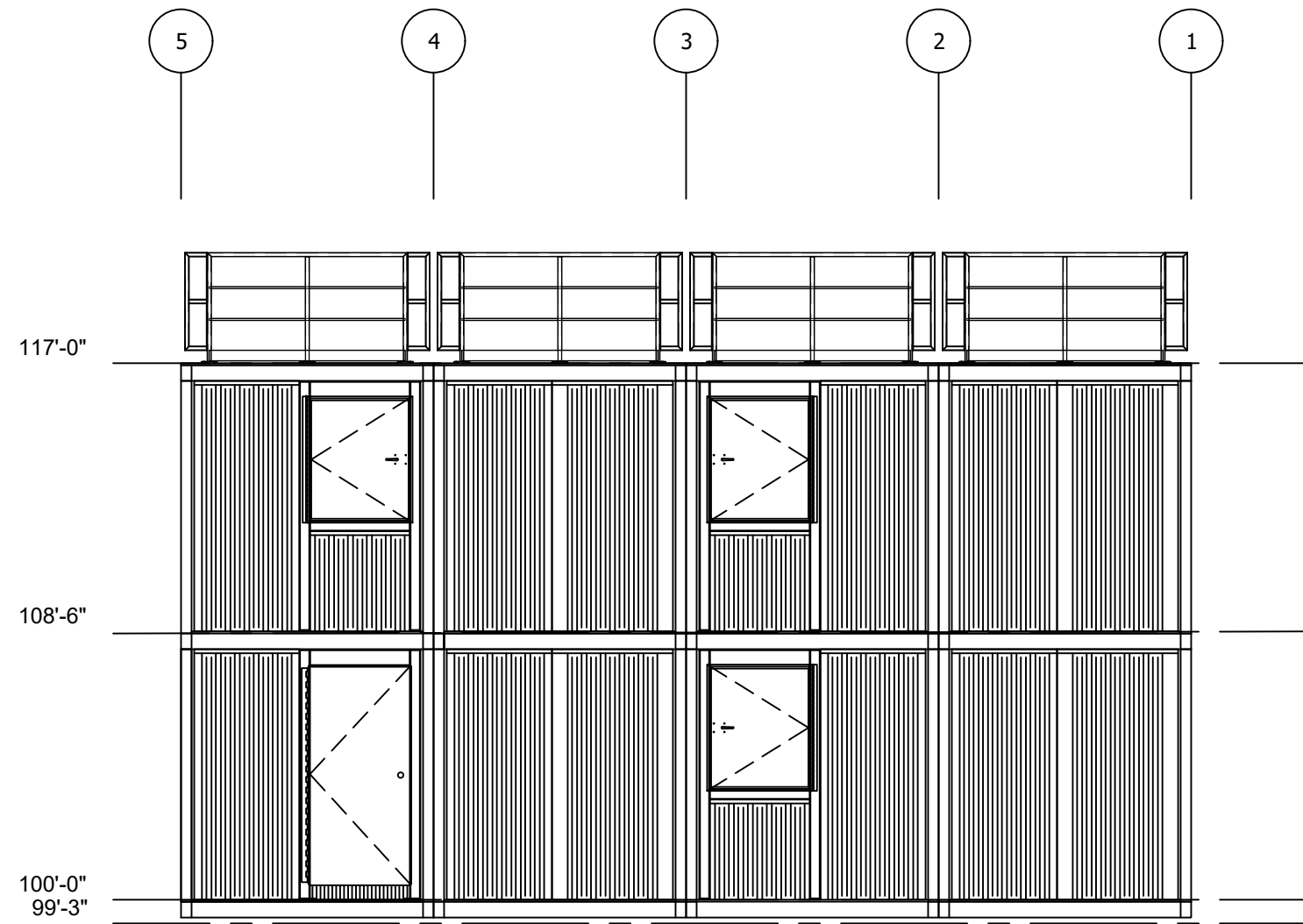
<small>THESE DRAWINGS, SPECIFICATIONS, IDEAS, DESIGNS, AND ARRANGEMENTS ARE AND SHALL REMAIN THE PROPERTY OF JAHNKE AND SONS CONSTRUCTION AND NO PART THEREOF SHALL BE COPIED, REPRODUCED, OR DISTRIBUTED WITHOUT WRITTEN CONSENT OF JAHNKE AND SONS CONSTRUCTION.</small>	ALL MEASUREMENTS IN INCHES	JAHNKE AND SONS CONST	
	ANGULAR TOL: ± 2m	9130 FLINT ST	
	DIM. TOL: ± 1/16	OVERLAND PARK, KS	
	MATERIAL: A36/A500S	PROJECT NUMBER: 19-W-000	REVISION DATES
	FINISH: HOT DIPPED GALV. USO	PROJECT NAME: MODx - D	1
SHEET NO.:	DRAWN BY: JPK	2	
	REVIEWED BY:	3	
	PRINT DATE: 5-29-19	4	



B LEFT SIDE ELEVATION
Scale: NTS

**PATENT
PENDING**

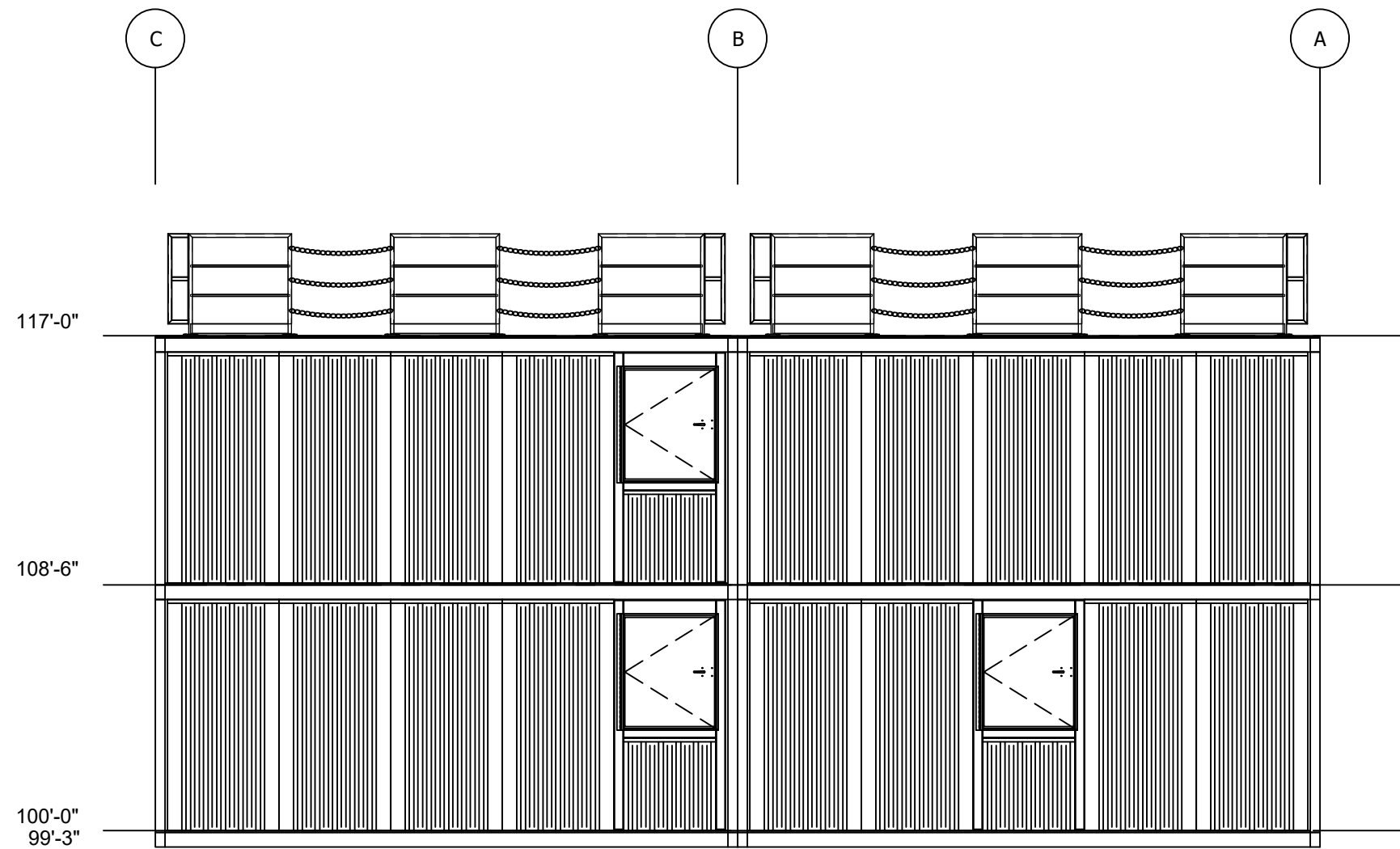
<small>THESE DRAWINGS, SPECIFICATIONS, IDEAS, DESIGNS, AND ARRANGEMENTS ARE AND SHALL REMAIN THE PROPERTY OF JAHNKE AND SONS CONSTRUCTION AND NO PART THEREOF SHALL BE COPIED, REPRODUCED, OR DISTRIBUTED WITHOUT WRITTEN CONSENT OF JAHNKE AND SONS CONSTRUCTION.</small>	ALL MEASUREMENTS IN INCHES	JAHNKE AND SONS CONST		
	ANGULAR TOL: ± 2m	9130 FLINT ST		
	DIM. TOL: ± 1/16	OVERLAND PARK, KS		
	MATERIAL: A36/A500S	PROJECT NUMBER: 19-W-000	REVISION DATES	
	FINISH: HOT DIPPED GALV. US0	PROJECT NAME: MODx - D	1	
SHEET NO.:	DRAWN BY: JPK	2		
	REVIEWED BY:	3		
	PRINT DATE: 5-29-19	4		



C REAR SIDE ELEVATION
Scale: NTS

**PATENT
PENDING**

<small>THESE DRAWINGS, SPECIFICATIONS, IDEAS, DESIGNS, AND ARRANGEMENTS ARE AND SHALL REMAIN THE PROPERTY OF JAHNKE AND SONS CONSTRUCTION AND NO PART THEREOF SHALL BE COPIED, REPRODUCED, OR DISTRIBUTED WITHOUT WRITTEN CONSENT OF JAHNKE AND SONS CONSTRUCTION.</small>	ALL MEASUREMENTS IN INCHES	JAHNKE AND SONS CONST	
	ANGULAR TOL: ± 2m	9130 FLINT ST	
	DIM. TOL: ± 1/16	OVERLAND PARK, KS	
	MATERIAL: A36/A500S	PROJECT NUMBER: 19-W-000	REVISION DATES
FINISH: HOT DIPPED GALV. US0	PROJECT NAME: MODx - D	1	
SHEET NO.:	DRAWN BY: JPK	2	
	REVIEWED BY:	3	
	PRINT DATE: 5-29-19	4	



D RIGHT SIDE ELEVATION
Scale: NTS

**PATENT
PENDING**

<small>THESE DRAWINGS, SPECIFICATIONS, IDEAS, DESIGNS, AND ARRANGEMENTS ARE AND SHALL REMAIN THE PROPERTY OF JAHNKE AND SONS CONSTRUCTION AND NO PART THEREOF SHALL BE COPIED, REPRODUCED, OR DISTRIBUTED WITHOUT WRITTEN CONSENT OF JAHNKE AND SONS CONSTRUCTION.</small>	ALL MEASUREMENTS IN INCHES	JAHNKE AND SONS CONST		
	ANGULAR TOL: ± 2m	9130 FLINT ST		
	DIM. TOL: ± 1/16	OVERLAND PARK, KS		
	MATERIAL: A36/A500S	PROJECT NUMBER: 19-W-000	REVISION DATES	
	FINISH: HOT DIPPED GALV. USO	PROJECT NAME: MODx - D	1	
SHEET NO.:	DRAWN BY: JPK	2		
	REVIEWED BY:	3		
	PRINT DATE: 5-29-19	4		